

For a safe driving trip

Road Trip Safety

Japanese traffic rule check (quiz) : 14 questions in all

日本交通規則検査 (測驗): 14 個問題

일본 교통 규칙 검사 (퀴즈) : 모두 14 문항

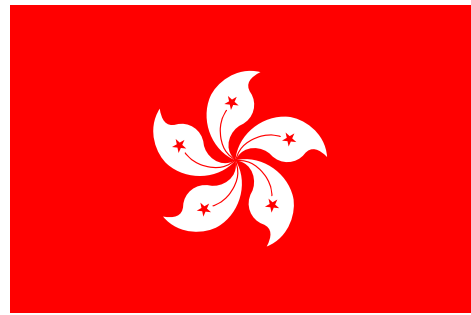
การตรวจสอบกฎจราจรของญี่ปุ่น (แบบทดสอบ): มีคำถามทั้งหมด 14 ข้อ

Pemeriksaan peraturan trafik Jepun (kuiz): 14 soalan dalam semua

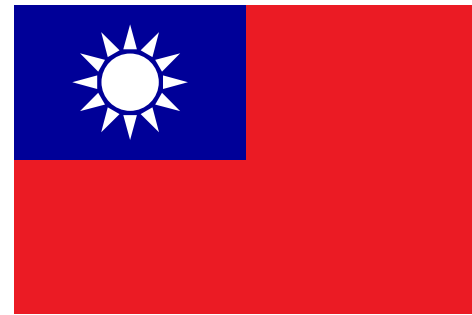
Start

Quiz about road safety rules in Japan (14 questions)

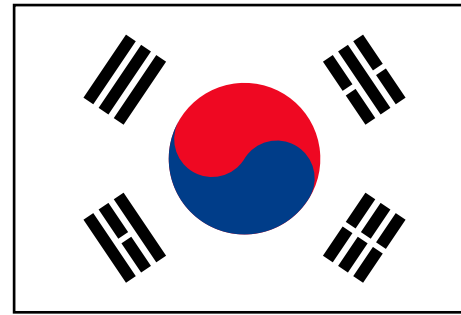
Please select your country.



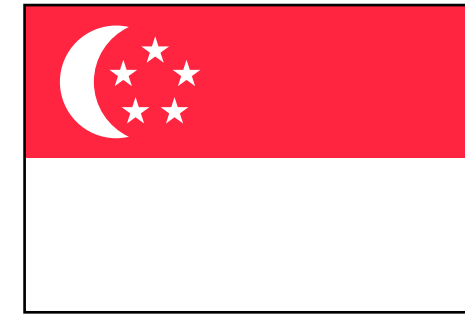
Hong Kong
香港



Taiwan
台灣



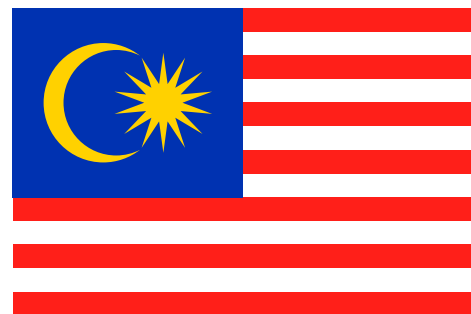
Korea
한국



Singapore
Singapura



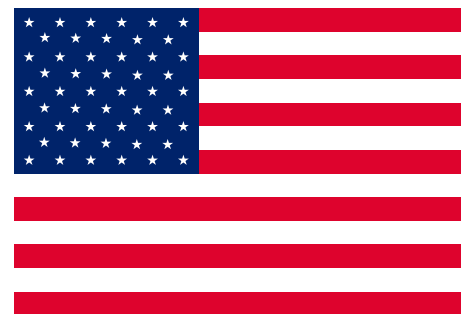
Thailand
ประเทศไทย



Malaysia
Malaysia



Australia



America



Europe

Other countries

Next

정보를 기재해주세요

Please enter your information

성별
Gender

남성
Male



여성
Female



연령
Generation

10대
Teens

20대
Twenties

30대
Thirties

40대
Forties

50대
Fifties

60대 이상
Over sixty

다음 / Next

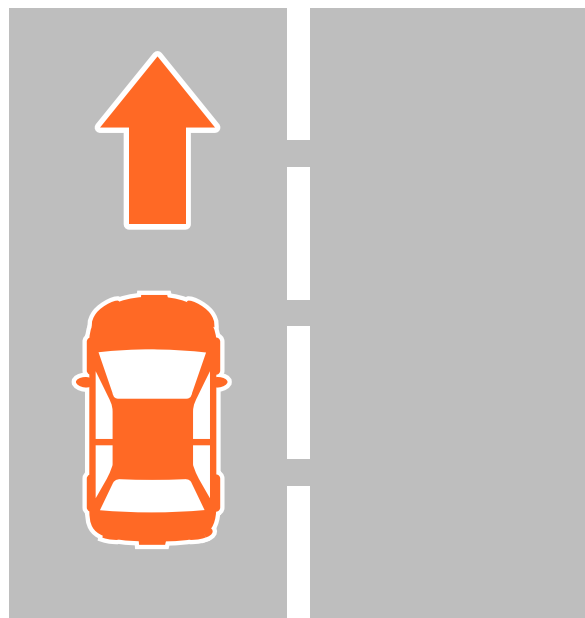
Q.01

일본에서 주행하는 차선이 어느 쪽입니까?

In Japan, which side of the road should you drive on?

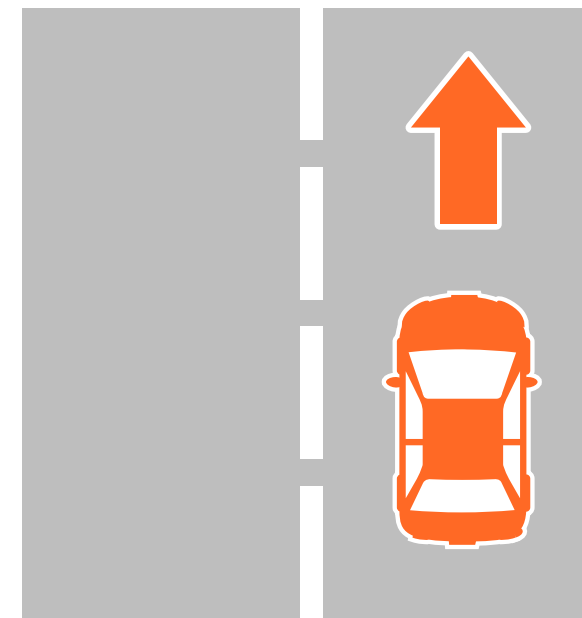
A

왼쪽 차선
Left lane



B

오른쪽 차선
Right lane

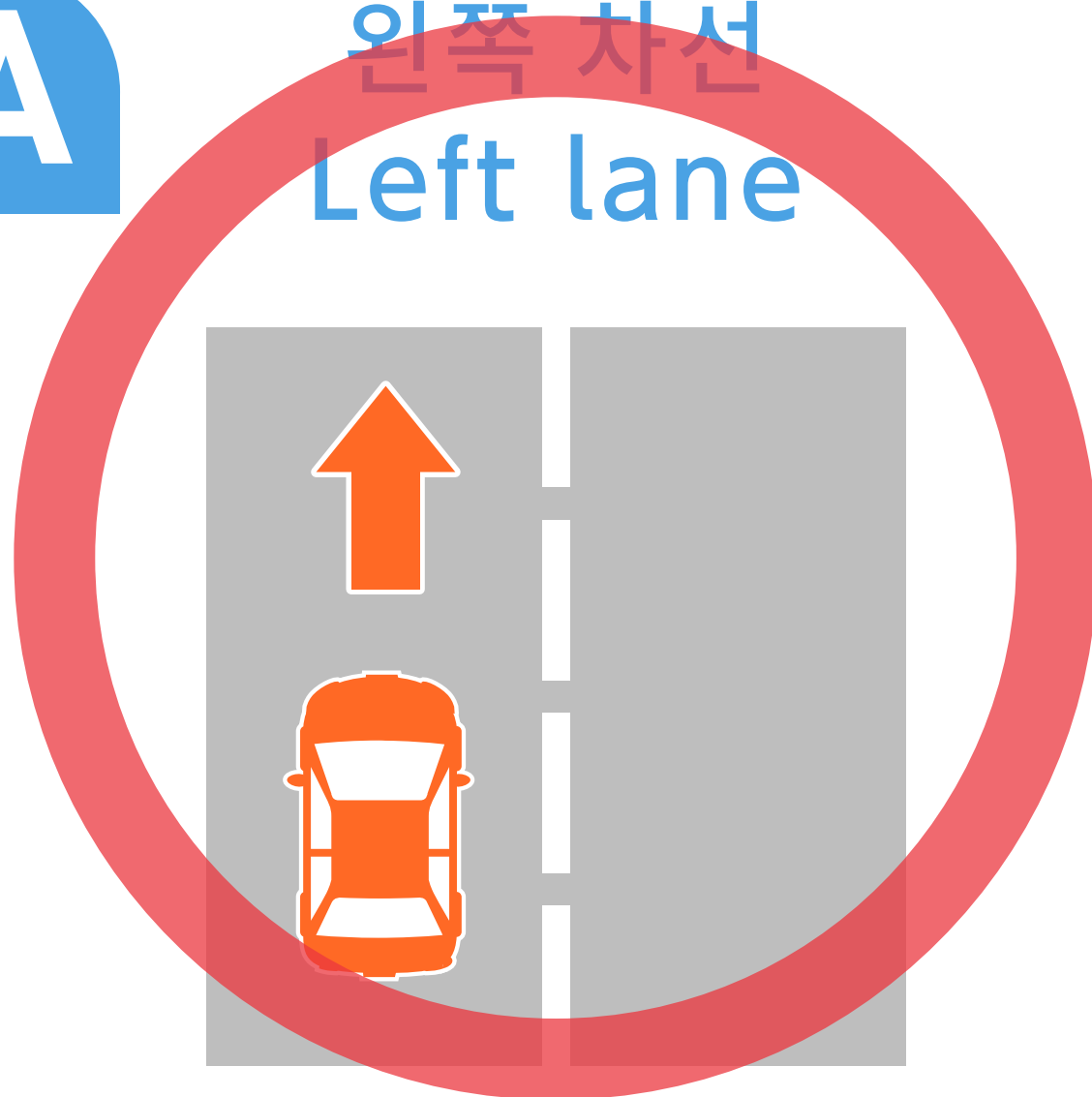


다음 / Next

답/Answer

A

왼쪽 차선
Left lane



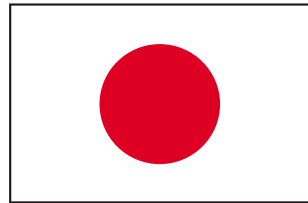
B

오른쪽 차선
Right lane



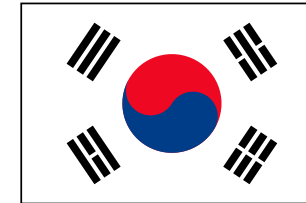
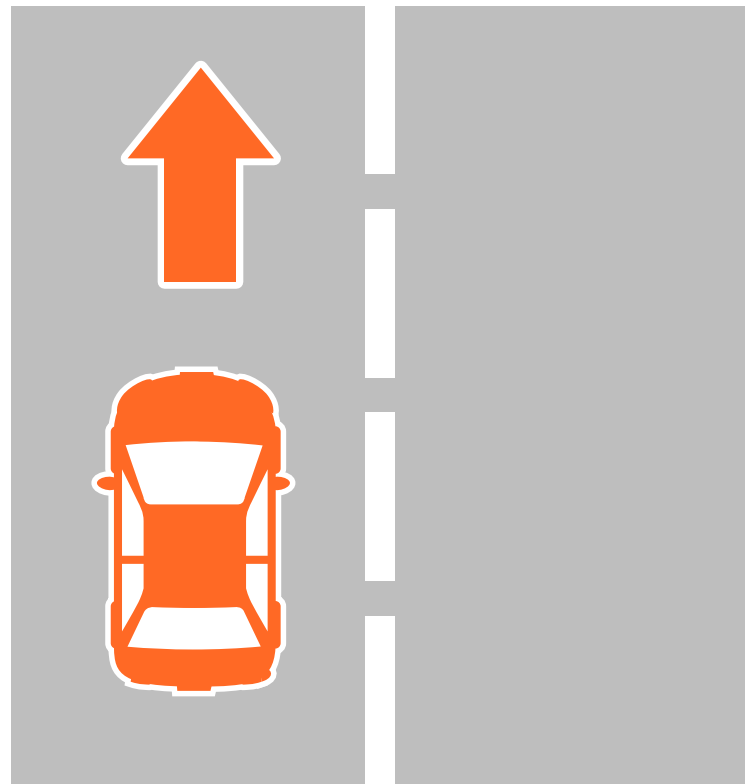
다음 / Next

설명 / Description



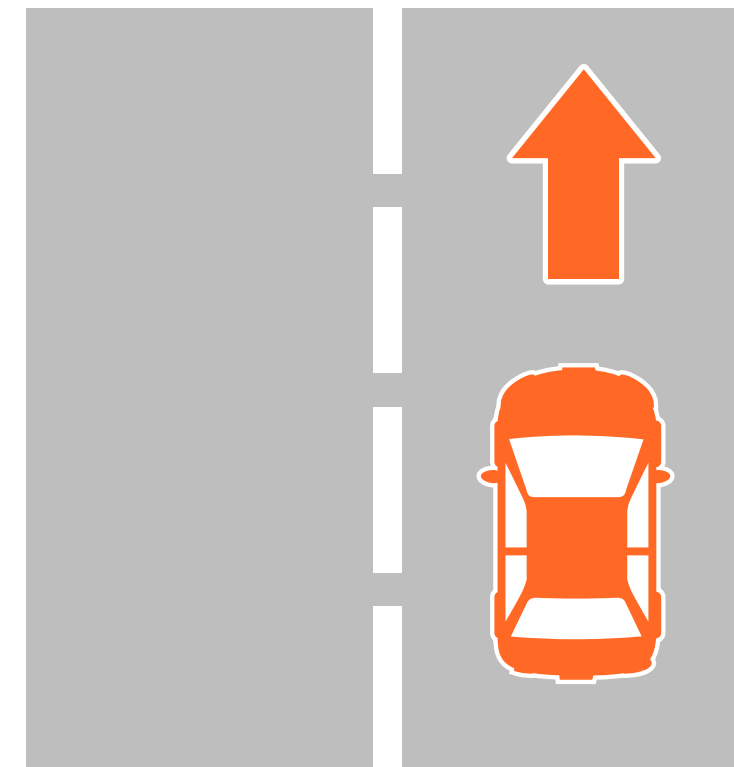
일본은 주행하는
차선이 왼쪽입니다.

Cars drive on the left side of
the road in Japan



한국에서는 우측 차선입니다.

Cars drive on the right side
of the road in Korea



다음 / Next

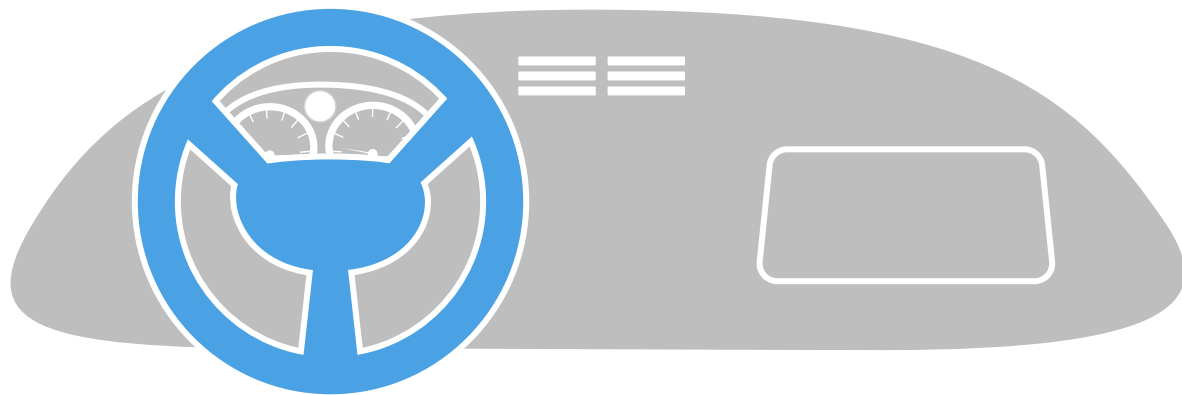
Q.02

일본에서는 핸들이 어느 쪽에 있습니까?

In Japan, which side is the steering wheel on?

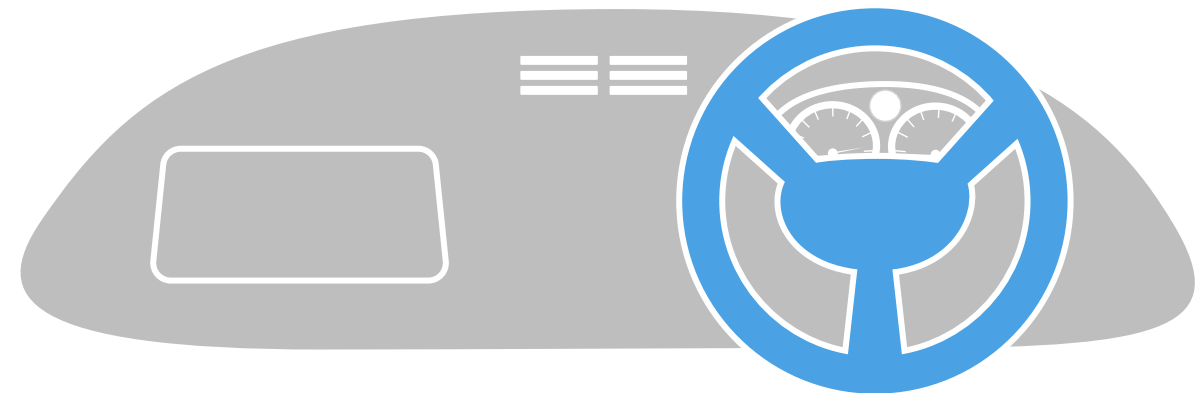
A

왼쪽 핸들
Left-hand drive



B

오른쪽 핸들
Right-hand drive



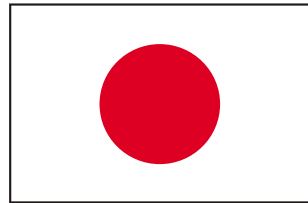
다음 / Next

답/Answer



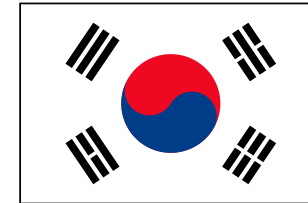
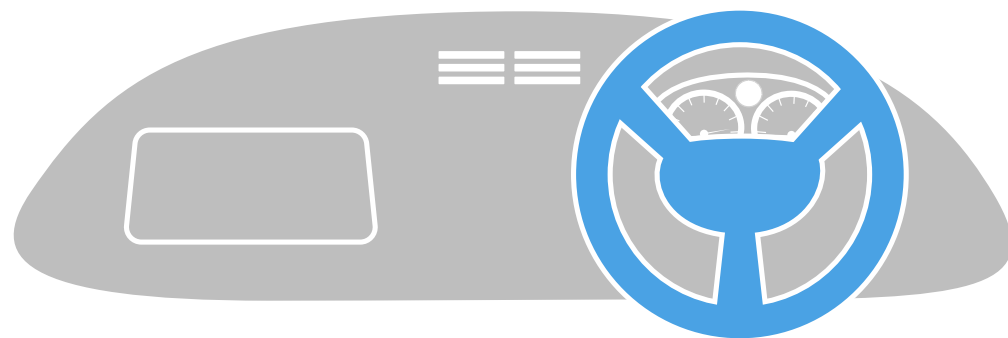
다음 / Next

설명 / Description



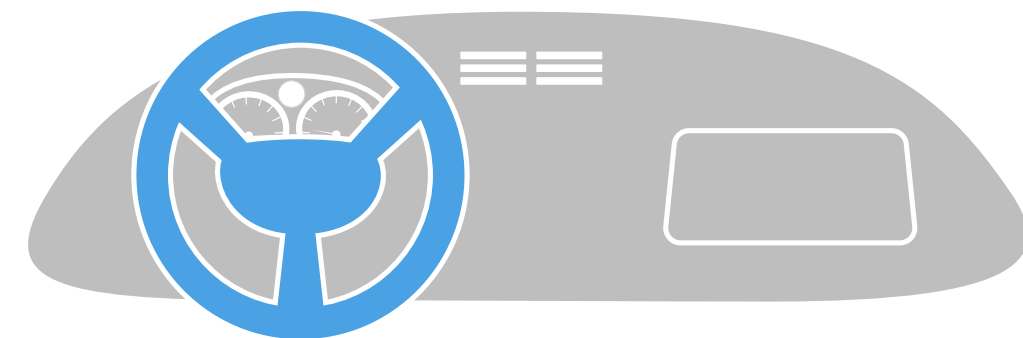
일본에서는 자동차가 왼쪽 차선으로 운전합니다. 일반적으로 핸들은 자동차 오른쪽에 있습니다. 반대편에서 운전하게 되면 위험합니다. 이 점을 운전할 때 주의 하십시오.

In Japan, cars drive on the left side of the road. Generally, the steering wheel is on right side of the car. It is dangerous to drive on the opposite side. Please be aware of this when driving.



한국에서는 일반적으로 차량 핸들이 좌측에 있습니다.

In Korea, vehicles are generally left-hand drive.



다음 / Next

Q.03

신호등의 각 색깔에 대한 정답을 선택하십시오.

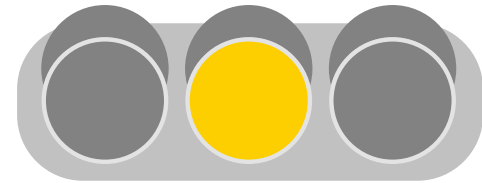
Please choose the correct answer for each traffic light color meaning.

정지
Stop

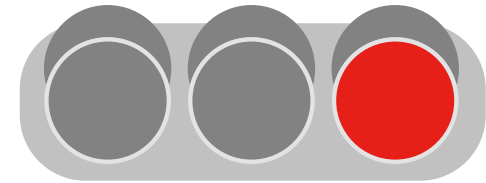
A



B

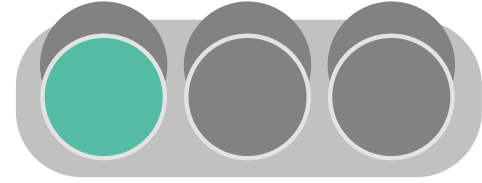


C

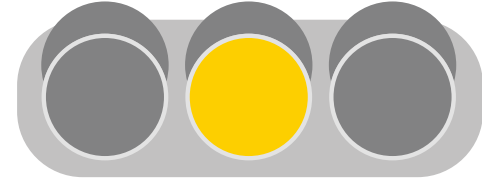


진입
Go

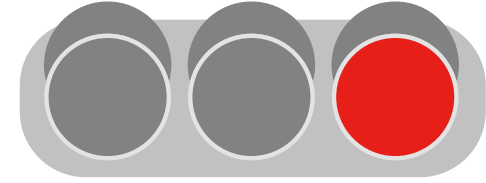
A



B

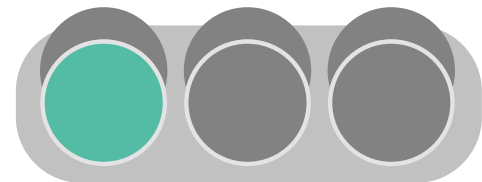


C

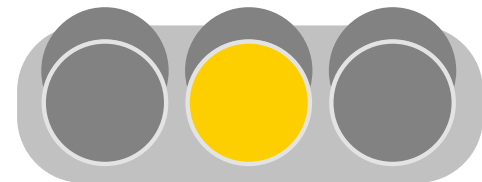


조심스럽게 진입
Go with caution

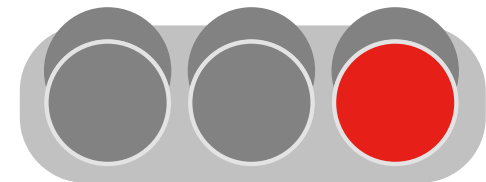
A



B



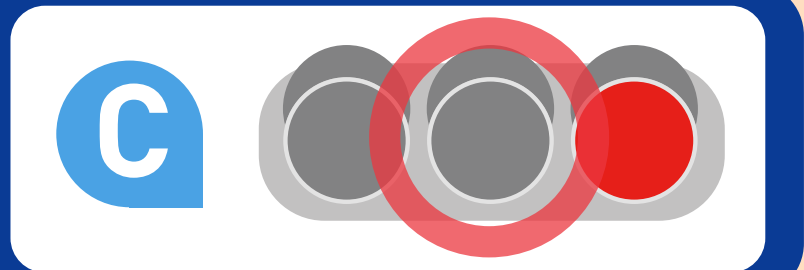
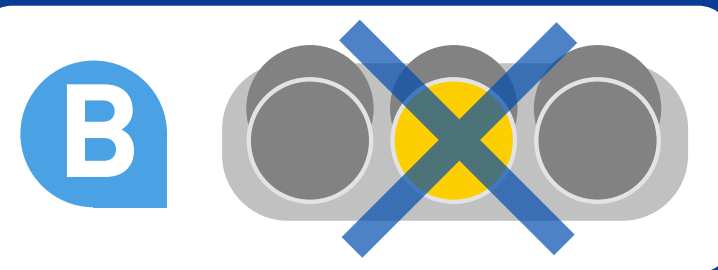
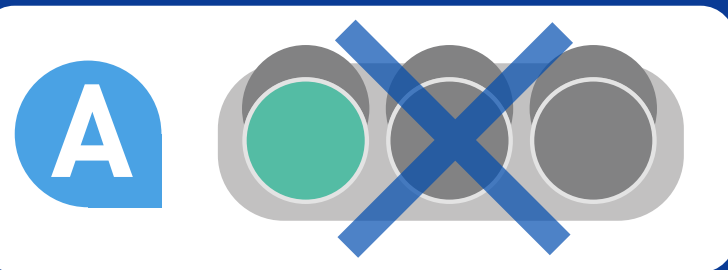
C



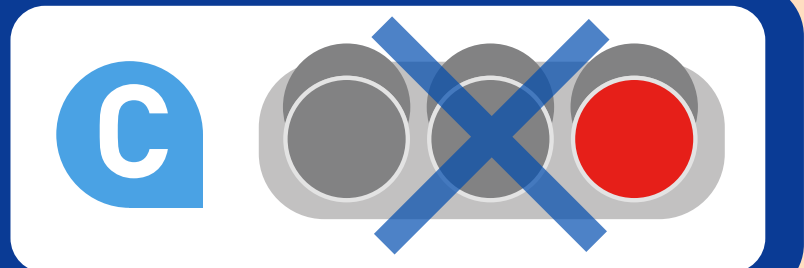
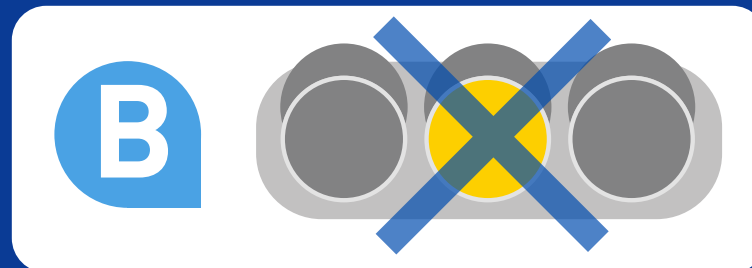
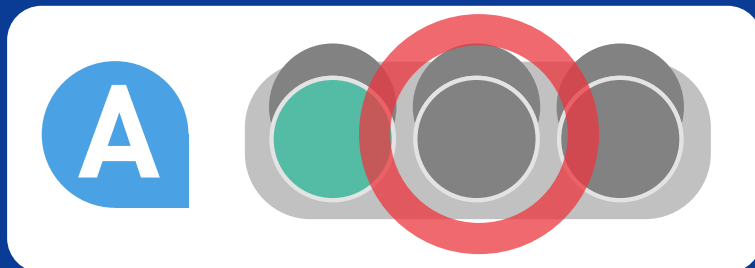
다음 / Next

답/Answer

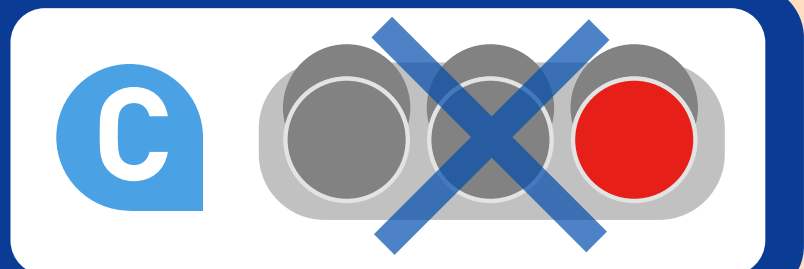
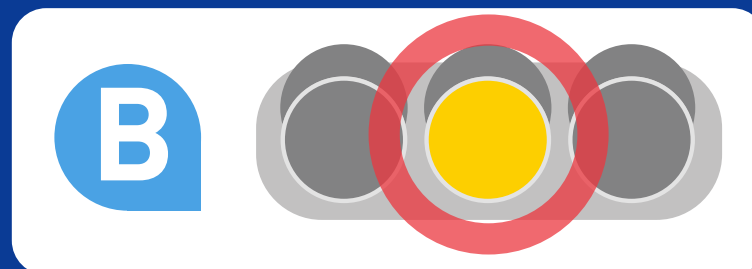
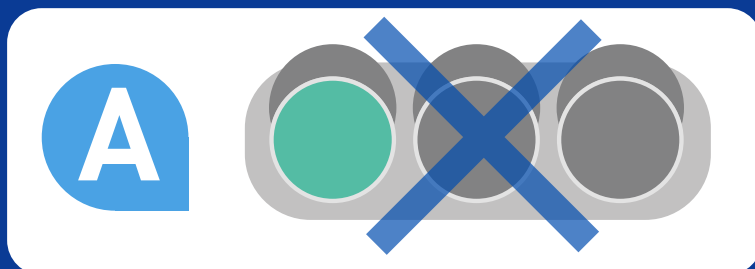
정지
Stop



진입
Go

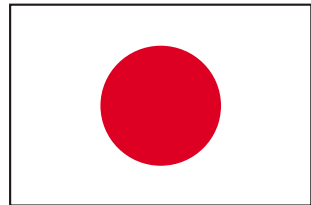


조심스럽게 진입
Go with caution



다음 / Next

설명 / Description



일본 신호등

Japanese traffic lights

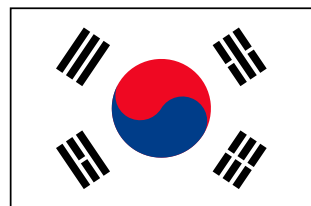


일본에서 신호등 색깔의 의미는 다음과 같습니다:

- ① 빨강: 정지 (정지표지판 앞에 멈춥니다)
- ② 파랑(초록): 진입 (앞으로 진입 또는 좌,우 회전)
- ③ 노랑(오렌지): 조심스럽게 진입
(차량을 우선정지, 정지표기판을 지나서면 안됨)

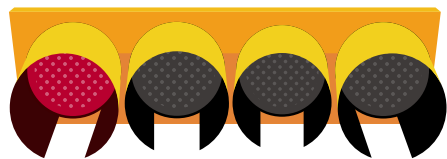
The meaning of Japanese traffic light colors are as follows. Please take note:

- ① Red: Stop (Stop at the Stop sign)
- ② Blue (Green): Go (Proceed forward, or turn right or left)
- ③ Yellow (Orange): Go with caution
(If you stop, do not go ahead of the Stop sign).



한국의 교통 신호등

Korean traffic lights



다음 / Next

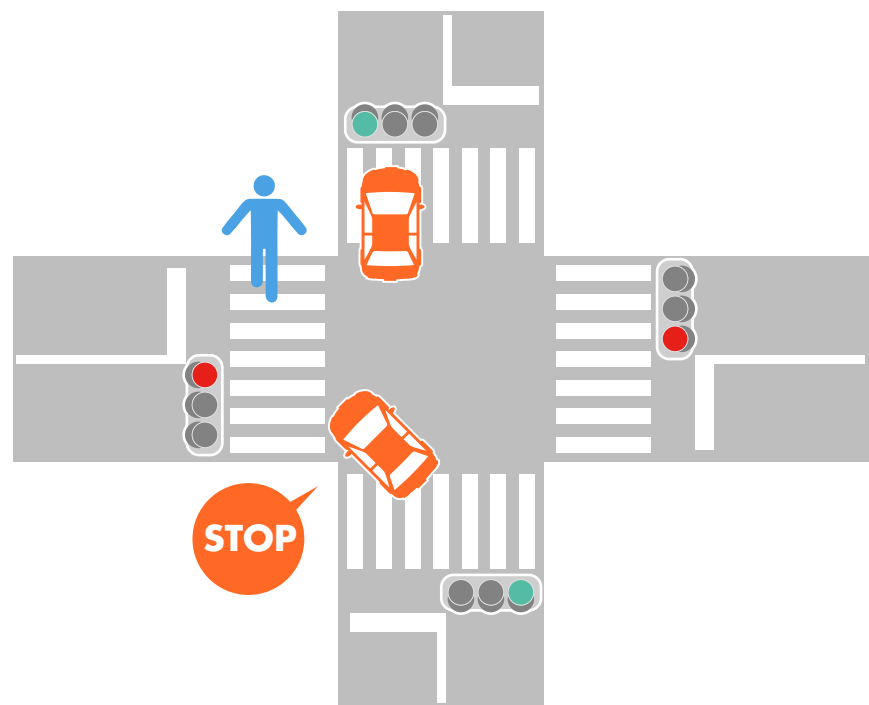
Q.04

일본 교차로에서 운전 할때 맞는 규칙을 선택해주세요.

In Japan, which is the correct answer at an intersection?

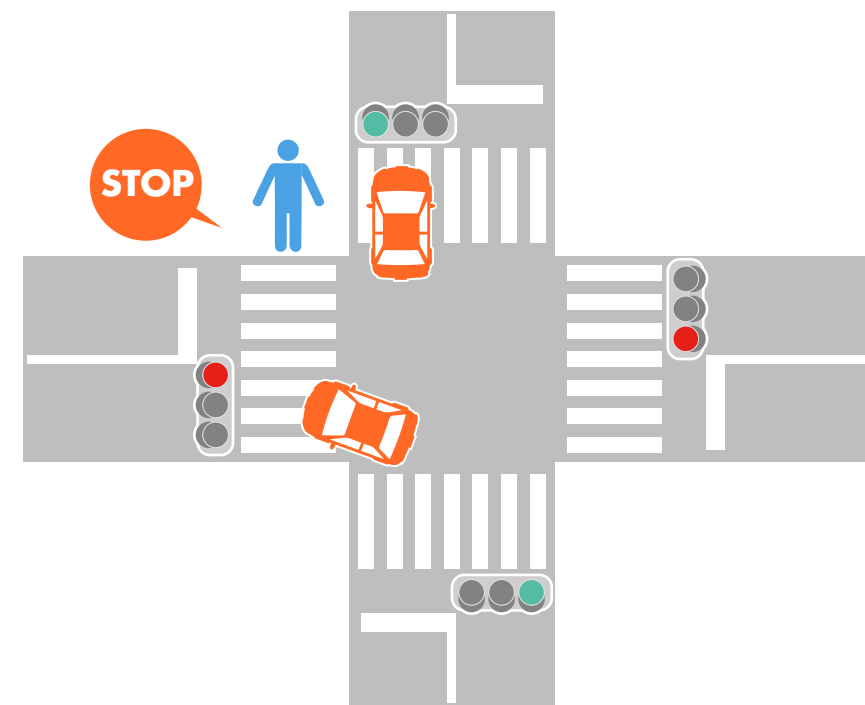
A

보행자 우선
Pedestrians have priority



B

차량 우선
Vehicles have priority



다음 / Next

답/Answer

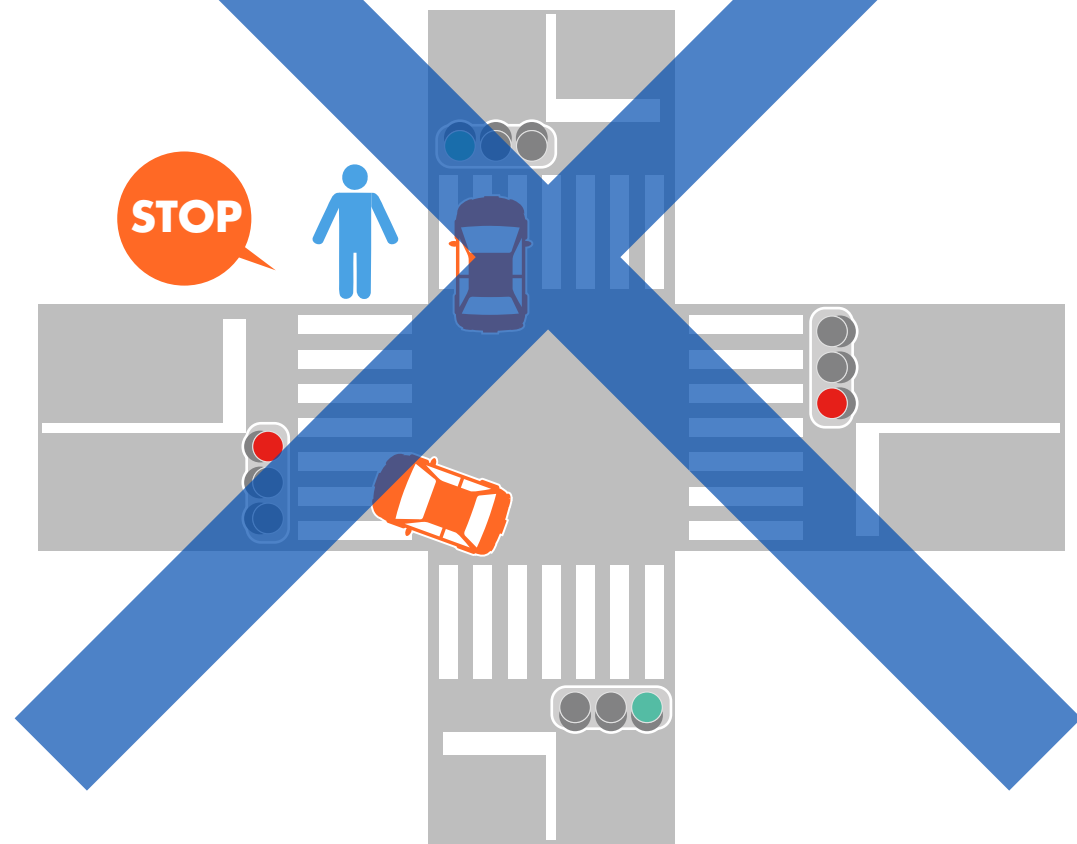
A

보행자 우선
Pedestrians have priority



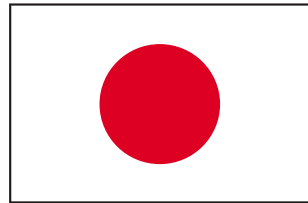
B

차량 우선
Vehicles have priority



다음 / Next

설명 / Description

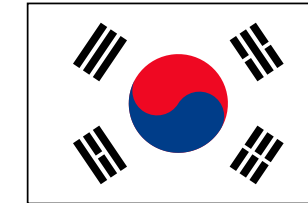


일본에서는 자동차가 교차로에서 좌,우 회전을 할 때 다음과 같은 우선 순위로 운행합니다:

- ① 보행자가 우선입니다 (자동차가 좌,우 회전 할 시에)
- ② 좌회전 하는 차량이 우선입니다
- ③ 본인 차량이 우회전 할려고 할 때에는 앞에서 오는 차량이 우선입니다

In Japan, when cars turn right or left at an intersection, please take note that the order of priority is as follows:

- ① Pedestrians have priority (when cars turn right or left)
- ② Priority to cars turning left
- ③ Priority to oncoming cars going straight when you are waiting to turn right



한국에서는 보행자 우선입니다

In Korea, priority is granted to pedestrians



다음 / Next

Q.05

본 표지판은 어떤 의미인가요?



What is the meaning of this sign?

A

천천히/양보
Slow/Yield

B

정지
Stop

C

출입허용
Entry Permitted

D

주차 금지
No Parking

다음 / Next

답/Answer

A

~~천천히/양보
Slow/Yield~~

B



C

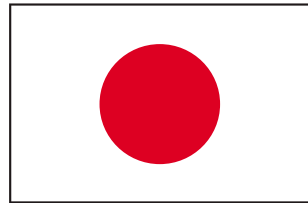
~~출입허용
Entry Permitted~~

D

~~주차 금지
No Parking~~

다음 / Next

설명 / Description

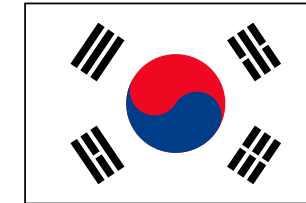


일본에서는 다음과 같은 곳에서 자동차가 정지 해야 합니다:

- ① 정지 표지판
- ② 빨간 불로 깜빡이는 신호등
- ③ 철도 건널목 앞

In Japan, cars must Stop at the places below:

- ① Stop sign
- ② Red blinking traffic lights
- ③ In front of a railroad crossing



한국의 정지표지판

Stop sign in Korea



다음 / Next

Q.06

본 화살표의 신호는 무슨 의미입니까? (단수 정답)



What is the meaning of this arrow traffic light?
(Single answer)

A

직진과 좌회전 진입 가능
Cars can go straight
and turn left

B

우회전 가능
Cars can turn right

C

노면 전차가 우회전 가능
Trams/streetcars/trolleys
can turn right

D

보행자 직진 진입 가능
Pedestrians can
go straight

다음 / Next

답/Answer

A

직진과 좌회전 진입 가능
Cars can go straight
and turn left

B

우회전 가능
Cars can turn right

C

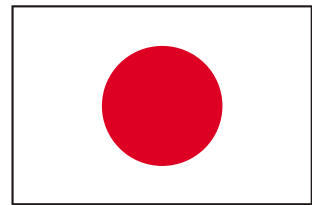
노면 전차가 우회전 가능
Trams/streetcars/trolleys
can turn right

D

보행자 직진 진입 가능
Pedestrians can
go straight

다음 / Next

설명 / Description



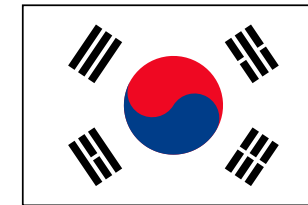
일본에서는 화살표 신호가 있습니다. 화살표의 색상과 방향에 따라 진행할 수있 있다는 점을 주의하십시오.

- ① 일본에서는 신호등이 빨간불이라도 화살표가 파란불이면 표시된 화살표 방향으로 갈 수 있습니다.
- ② 신호등이 빨간불이라도 화살표가 노란불이면 전차만 표시된 화살표 방향으로 갈 수 있습니다."



In Japan, there are arrow traffic lights. Please take note that vehicles can go depending on the arrow's direction and color.

- ① In Japan, if the arrow color is green (blue), cars can go in the direction it is pointing, even if the traffic light is red.
- ② If the arrow color is yellow, then only trams or streetcars can go in the direction it is pointing, even if the traffic light is red.



한국의 화살표 신호등
Arrow traffic lights
in Korea



다음 / Next

Q.07

표지판의 의미가 무엇입니까?

What is the meaning of this sign?



A

일방통행
One-way

B

차량 우선 도로
Road prioritized
for cars



A

갈림길
Fork in the road

B

우회전 금지
No right turns

다음 / Next

답/Answer



A



B



A

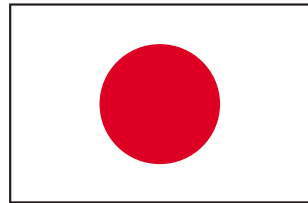


B



다음 / Next

설명 / Description

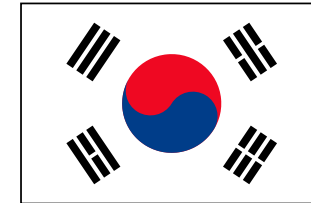


일본에서는 '일방통행' 및 '진입금지' 표지판이 많습니다. 아래와 같은 주의 사항을 참고해 주십시오:

- ① 운전자는 일방통행에 표시된 방향으로만 진입 가능합니다.
- ② 표지판에 표시된 방향을 따르십시오. 국가에 따라 표지판이 다를 수 있으니 주의해 주십시오.

In Japan, you can see many One-Way signs and No Throughfare/Do Not Enter signs. Please take note of those signs.

- ① Drivers must go in the direction that a One-way sign is pointing.
- ② Follow all directional signs towards the way they are pointing. Please be careful as there are many different kinds of traffic signs that may be different than in your country.



한국과 비슷한 표지판
Similar signs in Korea



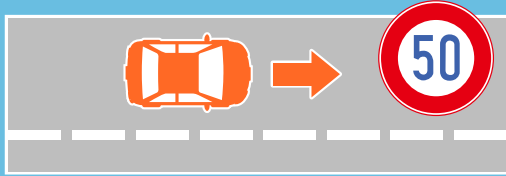
다음 / Next

Q.08

일본의 제한 속도에 대한 정답을 선택하십시오

Please choose the correct answer for the speed limit in Japan.

일반 도로
Regular roads



A

50km/h

B

60km/h

C

80km/h

고속도로
Highways



A

100km/h

B

120km/h

C

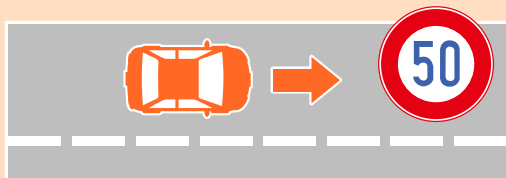
속도 제한 없음
No speed limit

다음 / Next

답/Answer

일반 도로

Regular roads



A

50km/h

B

60km/h

C

80km/h

고속도로

Highways



A

100km/h

B

120km/h

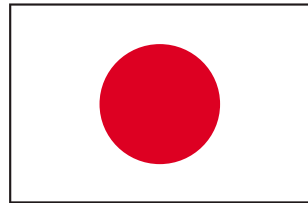
C

속도 제한 없음

No speed limit

다음 / Next

설명 / Description



일본에서는 속도 제한이 표지판에 표시되며 현재 도로 상태에 따라 다릅니다. 안전 운전 하며 속도 제한을 따르십시오.

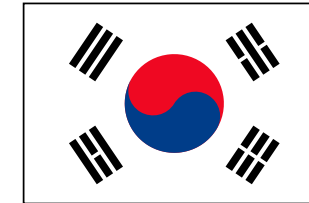
속도 제한 신호가 없는 경우 최대 속도는 일반 도로에서는 60km이고 고속도로에서는 100km입니다.

- ① 일반 도로 : 30 - 60km
- ② 고속도로 : 70 - 100km

In Japan, speed limits are shown on signs and is also dependent on current road conditions. Please drive carefully and follow the speed limit.

If there are no speed limit signs, the maximum speed is 60 km/h on regular roads and 100 km/h on the highway.

- ① Regular roads: 30-60km/h
- ② Highways: 70-100km/h



일반 도로 : 60km / h

고속도로 : 100km / h

Regular roads: 60km/h

Highways: 100km/h



다음 / Next

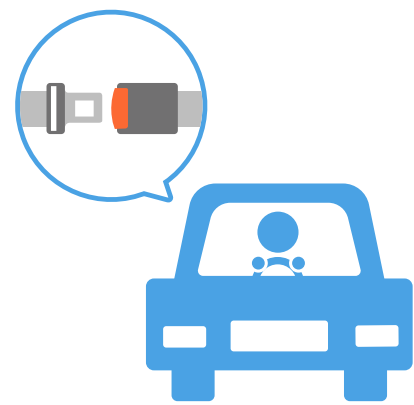
Q.09

운전 중에 허용되는 것은 무엇입니까?

What is allowed while driving?

A

안전 벨트 미착용
No seatbelt



B

음주 운전
Drunk driving



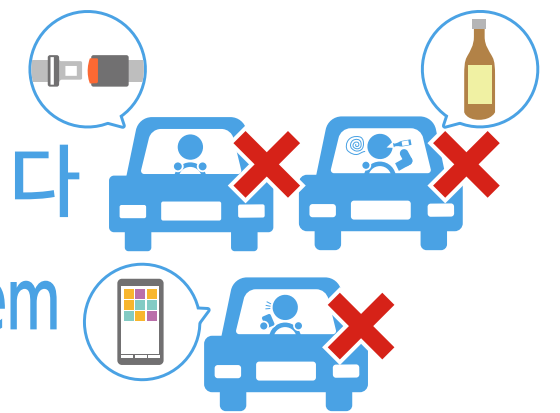
C

운전중 통화
Talking
on the phone



D

A, B, C는 모두
허용되지 않습니다
A, B and C all of them
are not allowed.

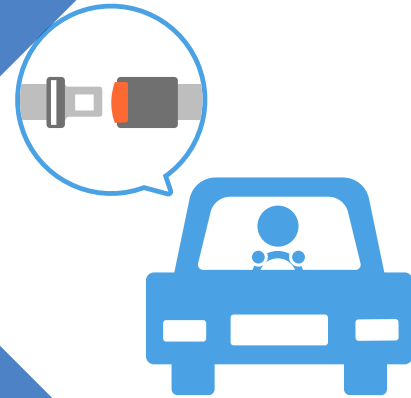


다음 / Next

답/Answer

A

안전 벨트 미착용
No seatbelt



B

음주 운전
Drunk driving



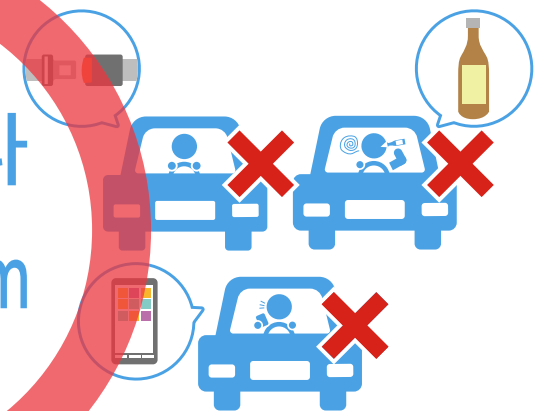
C

운전중 통화
Talking
on the phone



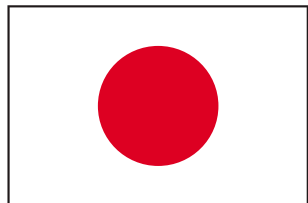
D

A, B, C는 모두
허용되지 않습니다
A, B and C all of them
are not allowed.



다음 / Next

설명 / Description

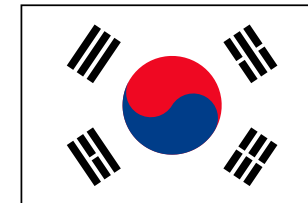


일본에서는 운전 중에 다음과 같은 행동이 위험하며 금지되어 있습니다. 운전자의 거주국가 교통법과 해당 국가의 규칙이 다를 수 있는 점을 주의 하여주시오.

- ① 음주 운전은 금지되어 있습니다. (술을 마신 후에는 맥주 같은 낮은 알코올성 음료를 포함하여 운전하는 것이 엄격히 금지됩니다).
- ② 모든 운전자 (운전석, 승객석 및 뒷좌석)는 안전 벨트를 착용해야 합니다.
- ③ 운전 중에는 전화기 또는 장치 사용을 (통화, 문자, 검색, 등) 금합니다.

In Japan, the following behaviors are dangerous and prohibited while driving. These rules may be different than those in your country, so please be aware of them.

- ① Drinking and driving is prohibited. **(It is strictly prohibited to drive after drinking any alcohol. This includes low alcoholic drinks like beer).**
- ② All vehicle occupants (in the driver's seat, passenger seats, and back seats) must fasten seatbelts.
- ③ Use of phones or devices (talking, texting, searching, etc.) is prohibited while driving.



- ① 한국에서는 음주 운전 불가
(알코올 농도에 대한 처벌기준)
혈중 알코올 농도 : 0.05 %
- ② 안전 벨트는 항상 착용해야 합니다.

- ① In Korea, drinking and driving is prohibited
(Penalty for alcohol concentration level)
Blood-alcohol level: 0.05%
- ② Seatbelts must always be worn.

다음 / Next

Q.10

일본에서 주차 할 때 다음 중 허용되는 것은? (복수 응답)

Which of the following is the allowed when parking in Japan?
(multiple answers)

A

공용 주차장에 주차
Parking in a public car parking lot.



B

편의점 앞에 장기 주차
Long-term parking at a convenience store.



C

다음과 같이 표시된
표지판은 도로 주차가능:
Parking on the side
of the road that displays
the sign below.



D

다음과 같이 표시된
표지판은 도로 주차가능:
Parking on the side
of the road that displays
the sign below.



다음 / Next

답/Answer

A

공용 주차장에 주차
Parking in a public car parking lot.



B

편의점 앞에 장기 주차
Long-term parking at a convenience store.



C

다음과 같이 표시된
표지판은 도로 주차가능:

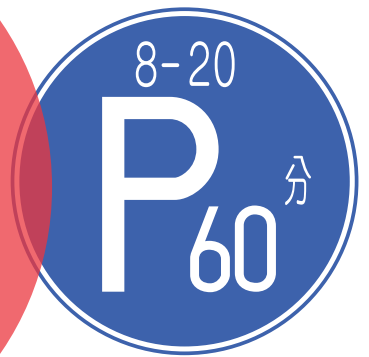
Parking on the side
of the road that displays
the sign below.



D

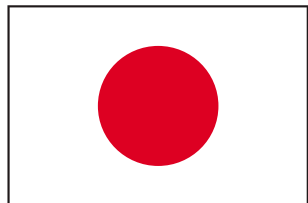
다음과 같이 표시된
표지판은 도로 주차가능:

Parking on the side
of the road that displays
the sign below.



다음 / Next

설명 / Description

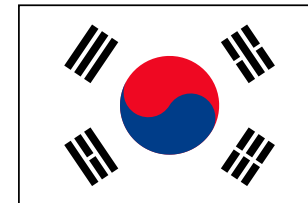


일본에서는 다음과 같은 지역의 주차가 허용됩니다 :

- ① 상점과 시설을 이용할 공공 주차장. (편의점에 주차하는 것은 비매너 입니다).
- ② 유료 주차장.
- ③ 주차 표시가있는 도로의 측면.
(주차 표시가없는 도로에 주차하는 경우 벌금이 부과 될 수 있습니다.)

In Japan, parking in the following areas are allowed:

- ① In a public parking lot where you will use the stores and facilities.
(It is considered poor etiquette to park at convenience stores but do not use them).
- ② At a toll parking lot.
- ③ On the side of the road that displays the parking sign. (If you park on a road with no parking sign, you may risk getting a fine).



(주차 금지 구역)

교통 표지판에 "" 금지 구역""으로 표시됩니다.
소화전으로부터 5m 이내의 주차장 없음.

(No Parking Area)

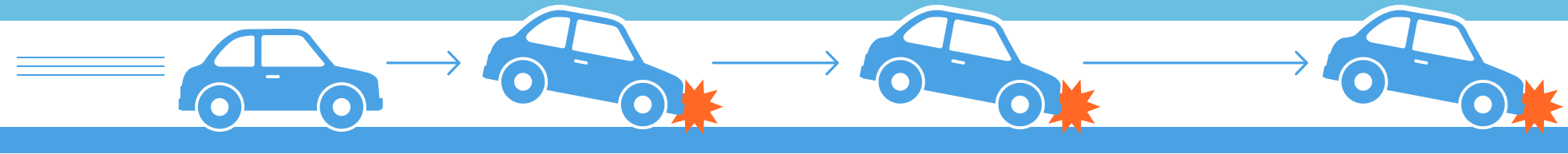
Traffic sign shows ""No stopping"" area
No parking within 5 meters from a fire hydrant

다음 / Next

Q. 11

얼음이 많은 겨울철 도로에서 건조한 도로에 비해 얼마나 미끄럽습니까?

How much more slippery is it on an icy winter road compared to a dry road?



A

차이가 없습니다
No difference

B

약 2 배 더 미끄럽습니다
About 2 times more slippery

C

약 5 배 더 미끄럽습니다
About 5 times more slippery

D

약 10 배 더 미끄럽습니다
About 10 times more slippery

다음 / Next

답/Answer

A

~~차이가 없습니다
No difference~~

B

~~약 2 배 더 미끄럽습니다
About 2 times more slippery~~

C

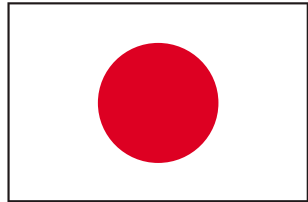
~~약 5 배 더 미끄럽습니다
About 5 times more slippery~~

D

약 10 배 더 미끄럽습니다
About 10 times more slippery

다음 / Next

설명 / Description



겨울철 도로는 건조한 도로에 비해 **10 배 더** 미끄럽습니다. 따라서, 천천히 주행해주십시오. 도로가 건조해 보여도 실제로는 미끄러울 수 있어 겨울철에는 특별히 운전 할 때 주의하여 주십시오.

A winter road is **10 times more** slippery compared to a dry road. Please drive slowly and responsibly. Take extra care during winter since roads may look dry but is actually icy.



다음 / Next

Q. 12

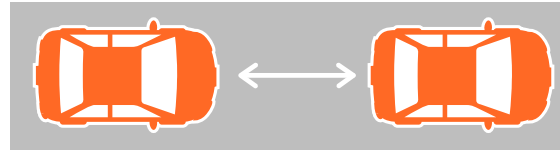
겨울철 운전시 정답을 선택 하십시오

Please choose the correct answer when driving in winter conditions.

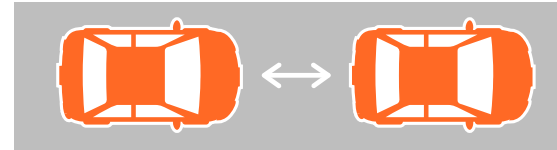
겨울철 안전거리는
주위에 차와 얼마를
두어야 합니까?

The following
distance behind
another car
(comparing to dry road conditions)

A 차이가 없습니다
There is no
difference



B 거리가 가까워야 합니다
The distance
should be closer



C 거리가 멀 수록 좋습니다
The distance
should be further



겨울철에는 속도가
어느 정도 되어야
합니까?

The driving
speed
(Compared to dry road conditions)

A 차이가 없습니다
There is no
difference



B 고속 주행
Drive faster



C 천천히 주행
Drive more
slowly



다음 / Next

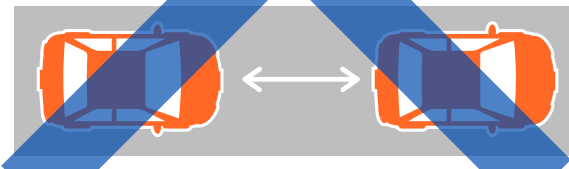
답/Answer

겨울철 안전거리는
주위에 차와 얼마를
두어야 합니까?

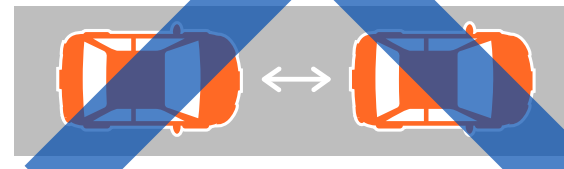
The following
distance behind
another car

(comparing to dry road conditions)

A 차이가 없습니다
There is no
difference



B 거리가 가까워야 합니다
The distance
should be closer



C 거리가 멀 수록 좋습니다
The distance
should be further



겨울철에는 속도가
어느 정도 되어
합니까?

The driving
speed

(Compared to dry road conditions)

A 차이가 없습니다
There is no
difference



B 고속 주행
Drive faster

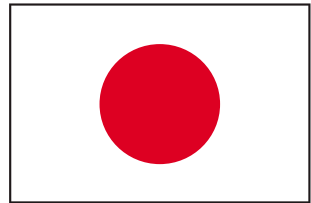


C 천천히 주행
Drive more
slowly



다음 / Next

설명 / Description



겨울철에는 도로가 건조할때 보다 차를 멈추기에 더 많은 시간과 거리를 필요로 합니다. 따라서 주위에 있는 차와 거리를두고 천천히 안전하게 운전하여 주십시오.

In winter conditions, it takes much more time and distance to stop your car compared to dry roads. Please leave more following distance behind another car, slow down, and drive safe.



다음 / Next

Q. 13

겨울철에 브레이크에 대한 정답을 선택 하십시오

Please choose the correct answer for braking in winter conditions.

A

급정거를 한다

Suddenly slam
on the brakes.



B

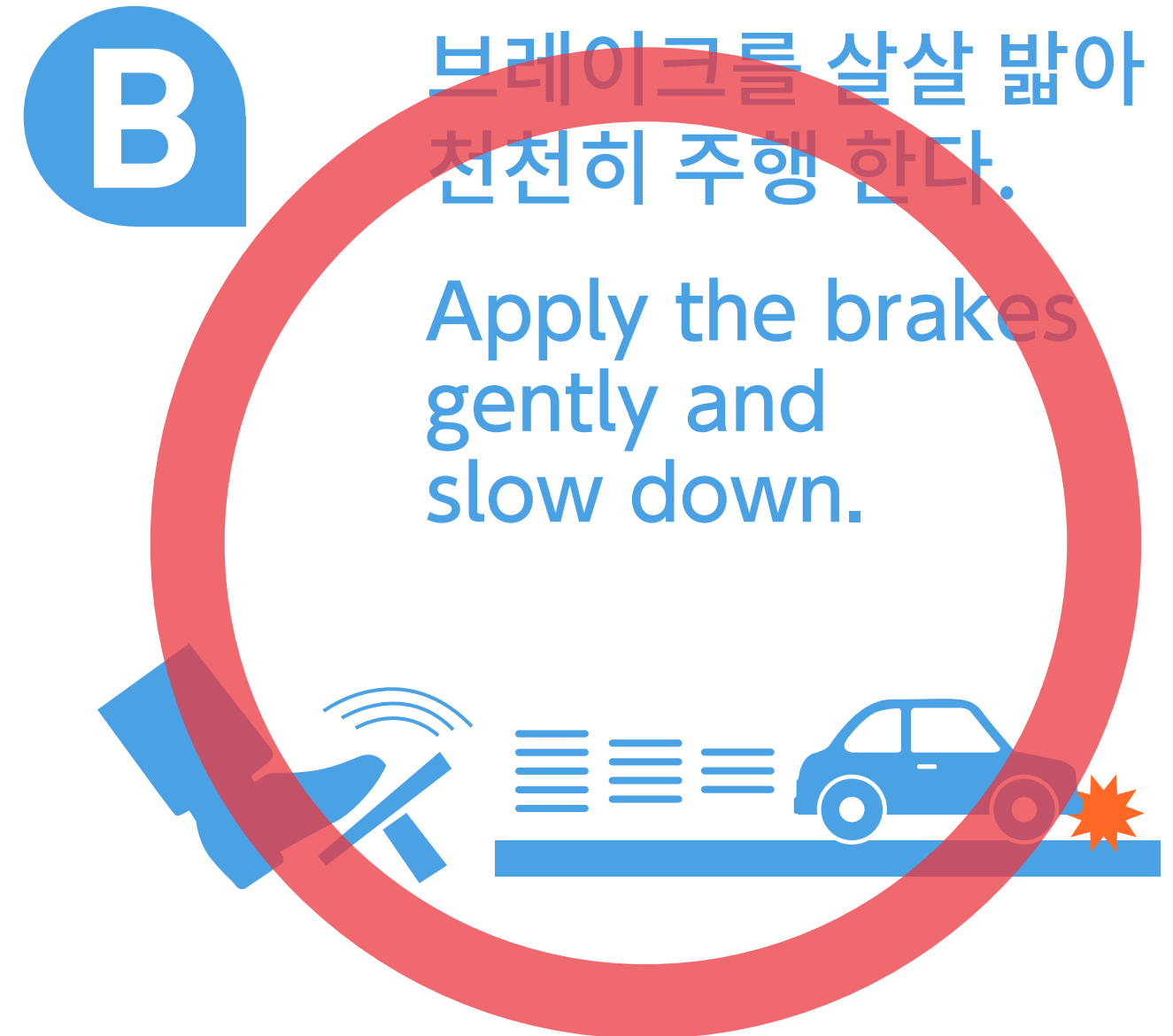
브레이크를 살살 밟아
천천히 주행 한다.

Apply the brakes
gently and slow down.



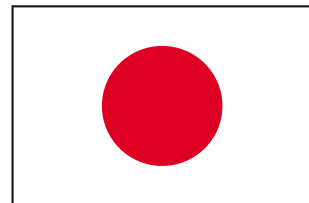
다음 / Next

답/Answer



다음 / Next

설명 / Description



얼음이 많은 도로에서 브레이크를 밟을 때에는 핸들이 잠길수 가 있어 차를 제어할 수 없습니다. 브레이크를 급하게 밟지 말고 살살 밟아주시면 속도가 낮춰집니다.

ABS 소개

일본에서는 대부분의 렌터카에 ABS (Anti-Lock Brake System)가 장착되어 있습니다. ABS가 장착 된 자동차는 운전자가 브레이크를 밟은 경우에도 바퀴가 잠기는 것을 방지합니다. ABS가 활성화되면 브레이크 페달이 갑자기 진동합니다. 진동이 있어도 계속 브레이크를 밟고 핸들을 사용하면서 원하는 방향으로 진입하여 주행 하십시오.

When slamming on the brakes on icy roads, the steering wheel will lock up and your car will slip out of control. Avoid slamming on the brakes and instead, gently apply the brakes to slow down before coming to a complete stop.

About ABS

In Japan, most rental cars have an anti-lock brake system (ABS). A car equipped with an ABS prevents the wheels from locking up, even if a driver slams on the brakes. When ABS is active, the brake pedal will suddenly vibrate. Continue stepping on the brake pedal even as it is vibrating and point the car in the direction you want to go using the steering wheel.



다음 / Next

Q. 14

겨울철 위험 지역 (커브길, 터널 출구)에서 운전할 때에 알맞는 정답을 선택 하십시오.

Please choose the correct answer for driving in dangerous areas (curves in the road, tunnel exits) during winter.

커브가 많은 도로에서 주행하는 방법

How to drive on curvy roads.

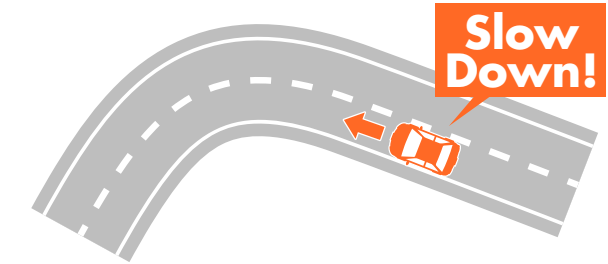
A

커브길에 진입 후 서서히 속도를 줄입니다
Reduce speed gradually after going into curves.



B

커브길 진입 전부터 속도를 줄입니다
Reduce speed before going into curves.



터널 출구 근처를 운전하는 방법

How to drive near tunnel exits.

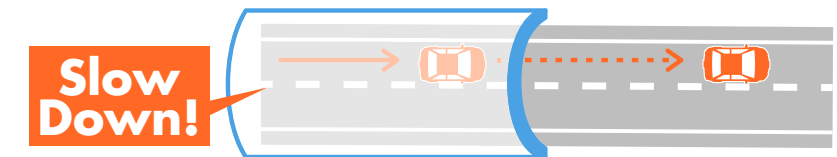
A

터널 내부와 같은 속도로 주행하여 주십시오.
Drive the same speed as inside a tunnel.



B

터널을 통과 하기 전에 속도를 줄이십시오
Reduce the speed in a tunnel before exiting.



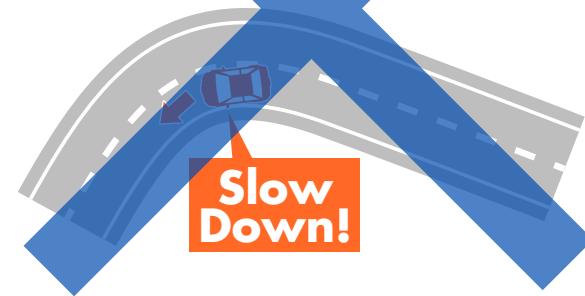
다음 / Next

답/Answer

커브가 많은
도로에서
주행하는 방법
How to drive on
curvy roads.

A

커브길에 진입 후 서서히 속도를 줄입니다
Reduce speed gradually after
going into curves.



B

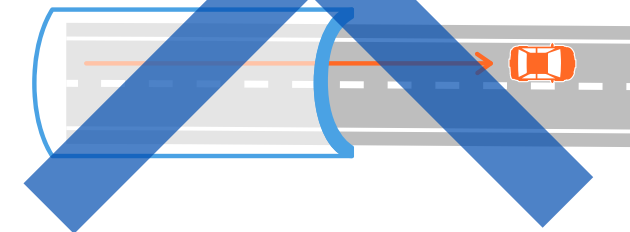
커브길 진입 전부터 속도를 줄입니다
Reduce speed before going into curves.



터널 출구
근처를 운전하는
방법
How to drive near
tunnel exits.

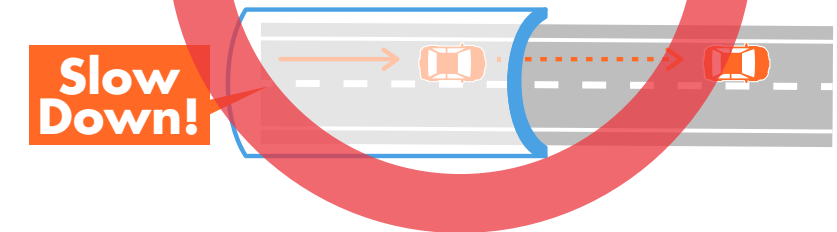
A

터널 내부와 같은 속도로 주행하여
주십시오.
Drive the same speed
as inside a tunnel.



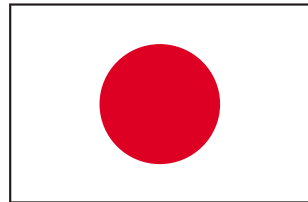
B

터널을 통과 하기 전에
속도를 줄이십시오
Reduce the speed in
a tunnel before exiting.



다음 / Next

설명 / Description

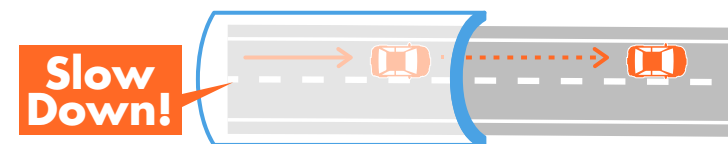
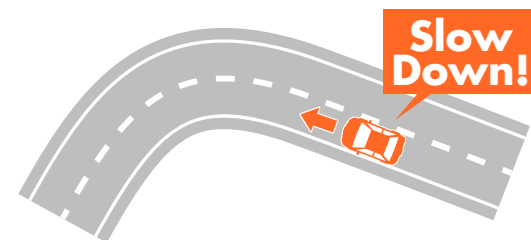


겨울철에는 일반 도로 상태에 비해 훨씬 더 미끄럽습니다. 특히 다음과 같은 장소에서는 안전하게 운전하십시오:

- ① 커브길: 미끄러운 도로에서는 특히 위험합니다. 커브길 진입전 속도를 줄이고 천천히 서행하십시오.
- ② 터널 : 일반적으로 터널 내부 도로는 건조합니다. 다만, 출구는 종종 미끄러울 수 있으며 터널에서 빠져나올 때에는 같은 속도로 주행하면 차가 미끄러질 수 있습니다. 터널 출구에서 속도를 줄이십시오.

In winter, roads are much more slippery compared to dry road conditions. Take care to drive safely, especially near the following places.

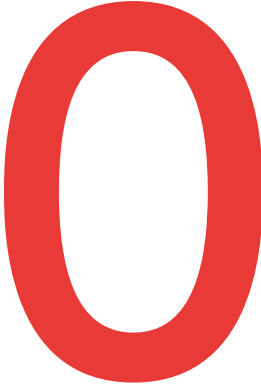
- ① Curves: Turns in the road become especially dangerous when it is slippery. Reduce speed before going into curves and make turns slowly.
- ② Tunnel: It is usually dry inside a tunnel. However, the exit is often icy and may cause your car to slip if you come out of a tunnel at the same speed. Reduce speed before the tunnel exit.



다음 / Next

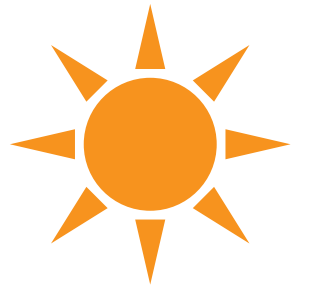
일본 교통 규정의 이해력 체크

Comprehension check of traffic rules in Japan

| | 당신의 답 Your Answer | 점수 Your score |
|---|----------------------|--|
| Q.01 차선/Driving lane | ○ |  <hr/> <p>14</p> |
| Q.02 핸들/Steering wheel | ○ | |
| Q.03 신호등/Traffic lights | × | |
| Q.04 교차로에서 따라야 하는 규정/Rules of the intersection | × | |
| Q.05 정지 표지판/Stop sign | ○ | |
| Q.06 화살표 신호등/Arrow traffic lights | ○ | |
| Q.07 일반통행/One-way | ○ | |
| Q.08 제한속도/Speed limits | ○ | |
| Q.09 주행 규정/Rules while driving | × | |
| Q.10 주차장/Parking | ○ | |
| Q.11 겨울철 도로주행시 유의 사항 /Slippery conditions on winter roads | × | |
| Q.12 겨울철 운전/Winter driving | × | |
| Q.13 겨울철 브레이크 방법/Braking in winter | ○ | |
| Q.14 겨울철 특히 위험한 지역/Especially dangerous areas in winter | ○ | |

다음 / Next

안전하고 즐거운 여행 되십시오!



Have a safe and nice trip!



완료 / Finish