

For a safe driving trip

Road Trip Safety

Japanese traffic rule check (quiz) : 14 questions in all

日本交通規則検査 (測驗) : 14 個問題

일본 교통 규칙 검사 (퀴즈) : 모두 14 문항

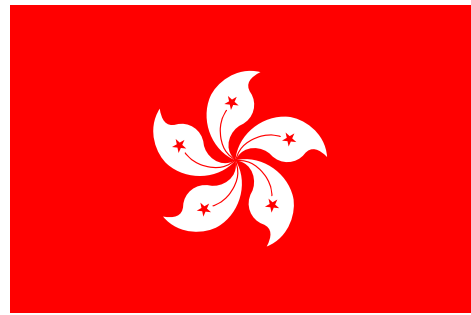
การตรวจสอบกฎจราจรของญี่ปุ่น (แบบทดสอบ): มีคำถามทั้งหมด 14 ข้อ

Pemeriksaan peraturan trafik Jepun (kuiz): 14 soalan dalam semua

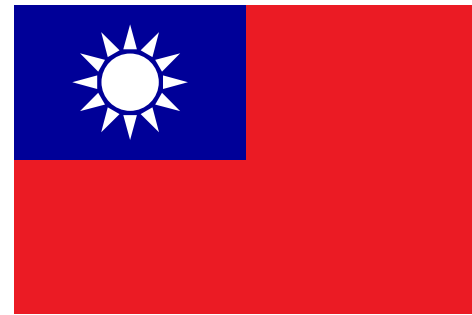
Start

Quiz about road safety rules in Japan (14 questions)

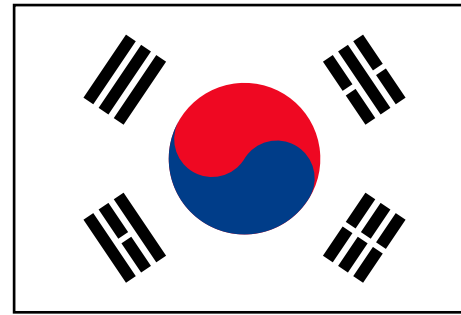
Please select your country.



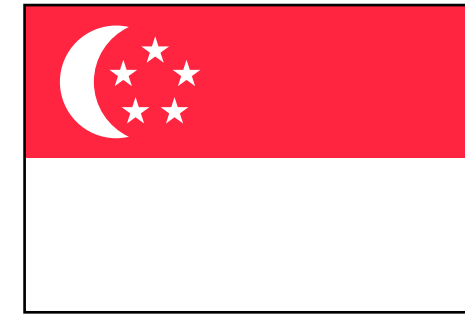
Hong Kong
香港



Taiwan
台灣



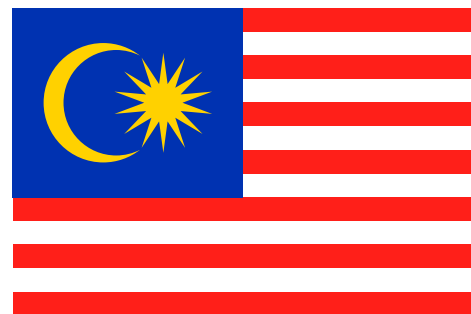
Korea
한국



Singapore
Singapura



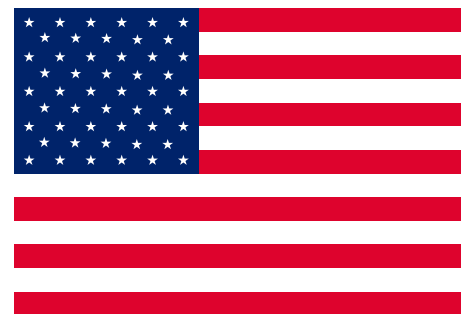
Thailand
ประเทศไทย



Malaysia
Malaysia



Australia



America



Europe

Other countries

Next

Please enter your information

Gender

Male



Female



Generation

Teens

Twenties

Thirties

Forties

Fifties

Over sixty

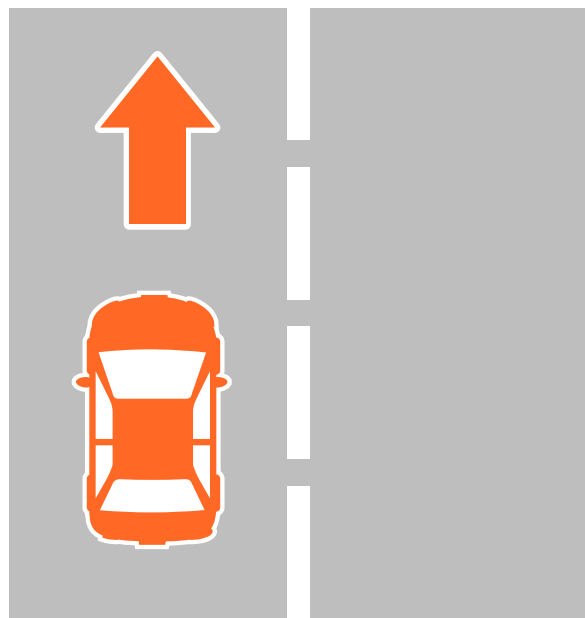
Next

Q.01

In Japan, which side of the road should you drive on?

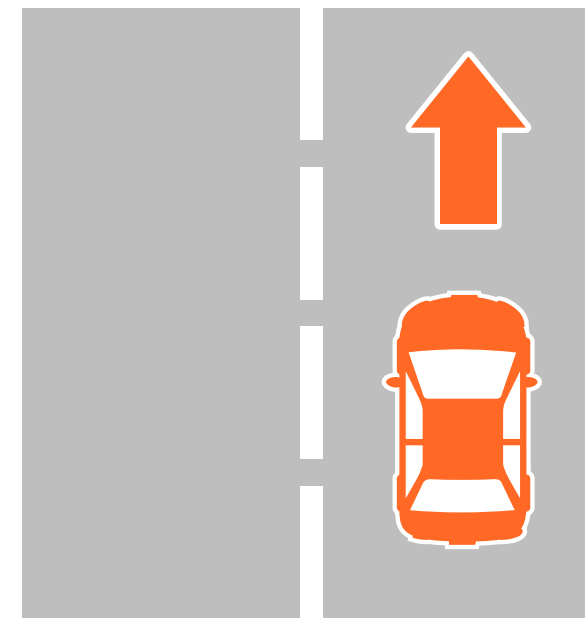
A

Left lane



B

Right lane

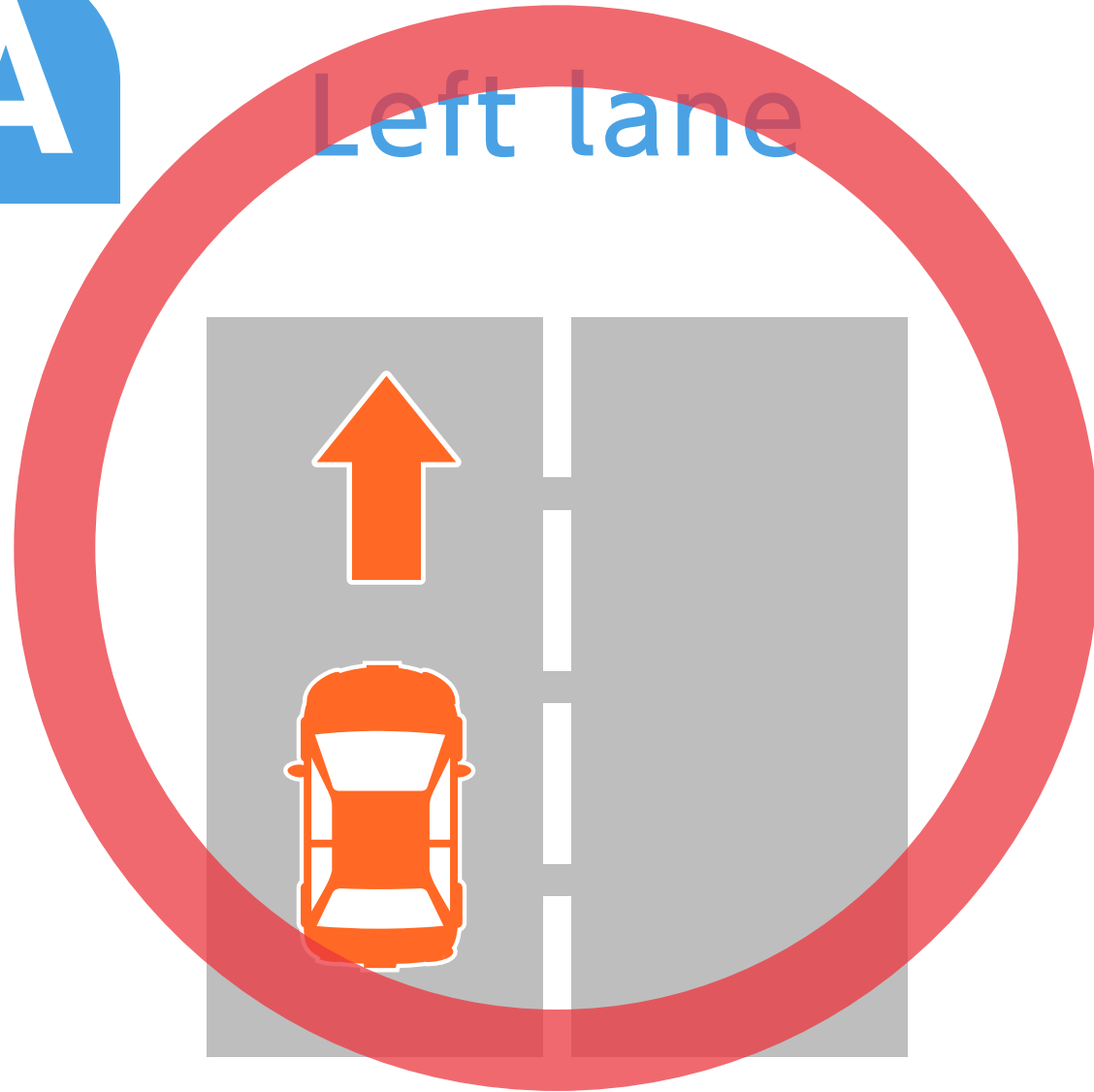


Next

Answer

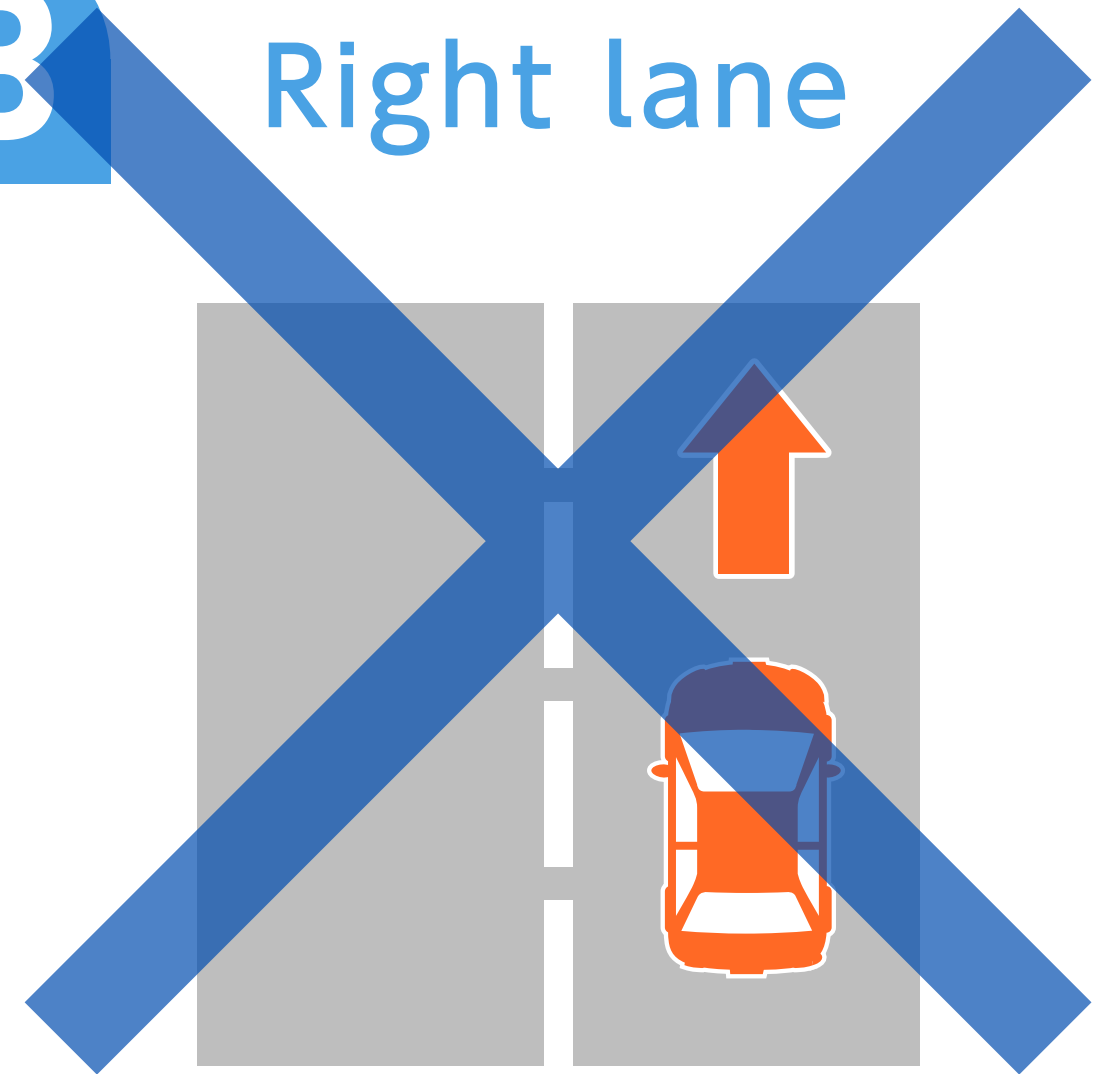
A

Left lane



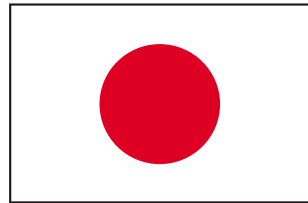
B

Right lane

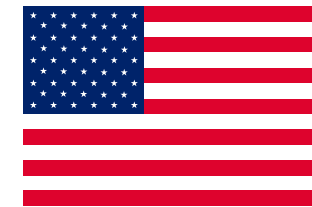
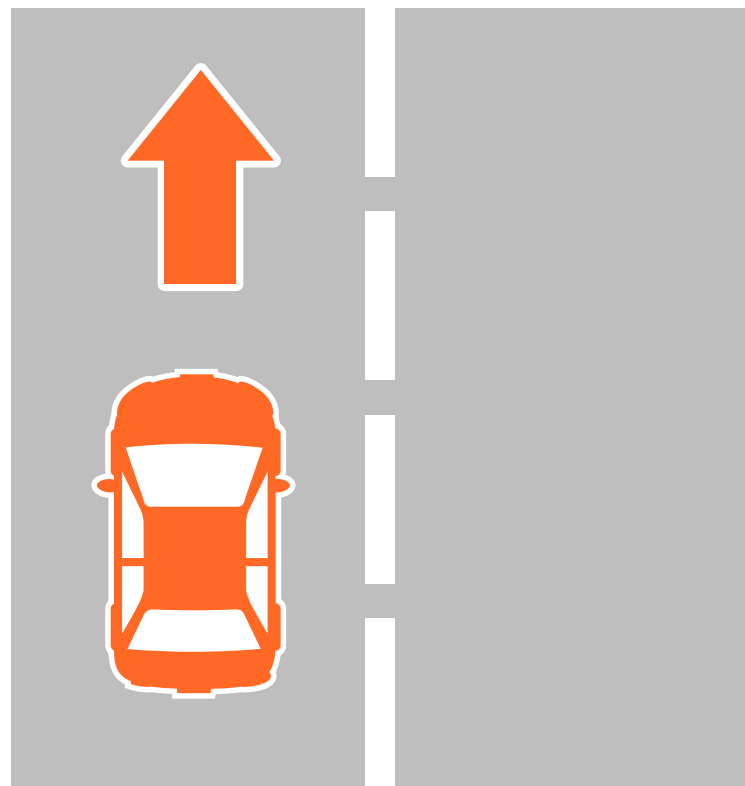


Next

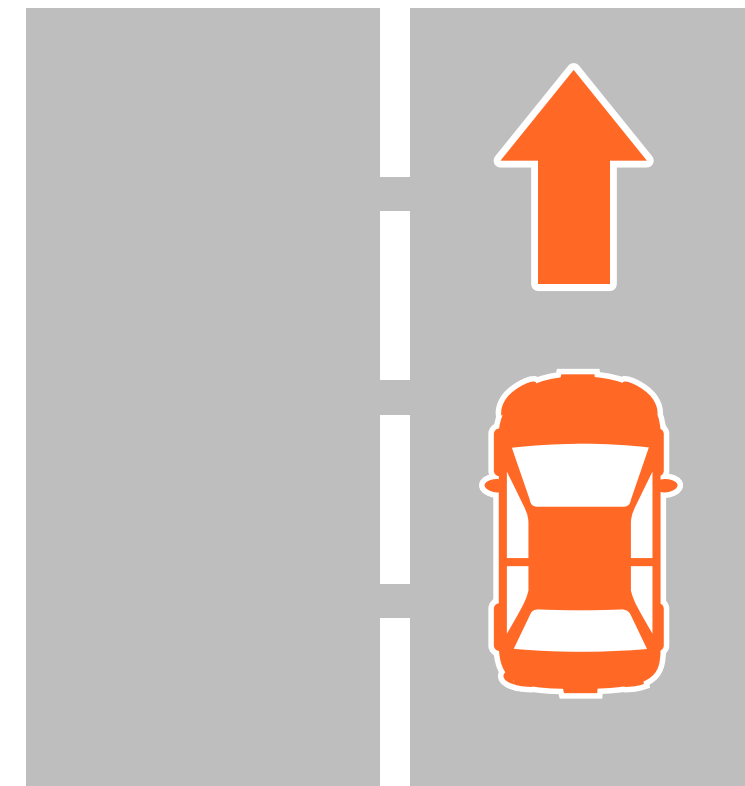
Description



Cars drive on the left side of the road in Japan



Cars drive on the right side of the road in America



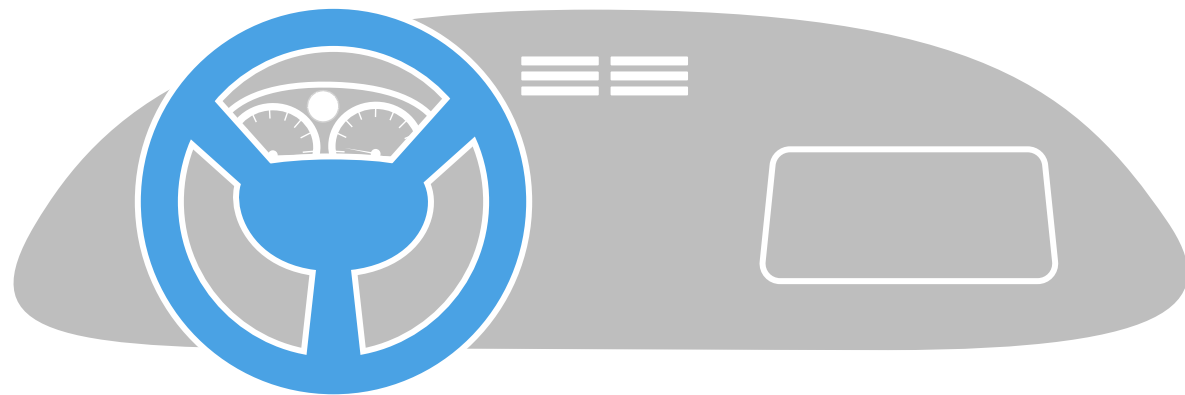
Next

Q.02

In Japan, which side is the steering wheel on?

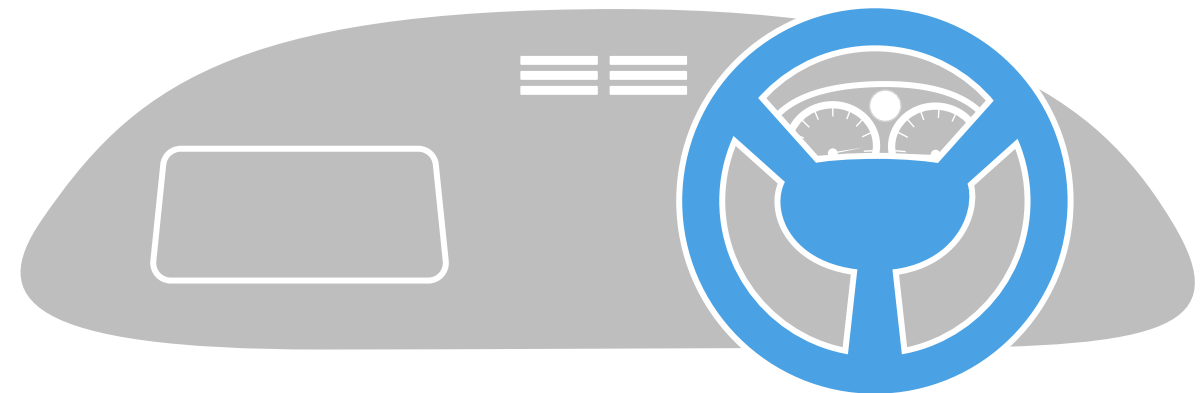
A

Left-hand drive



B

Right-hand drive



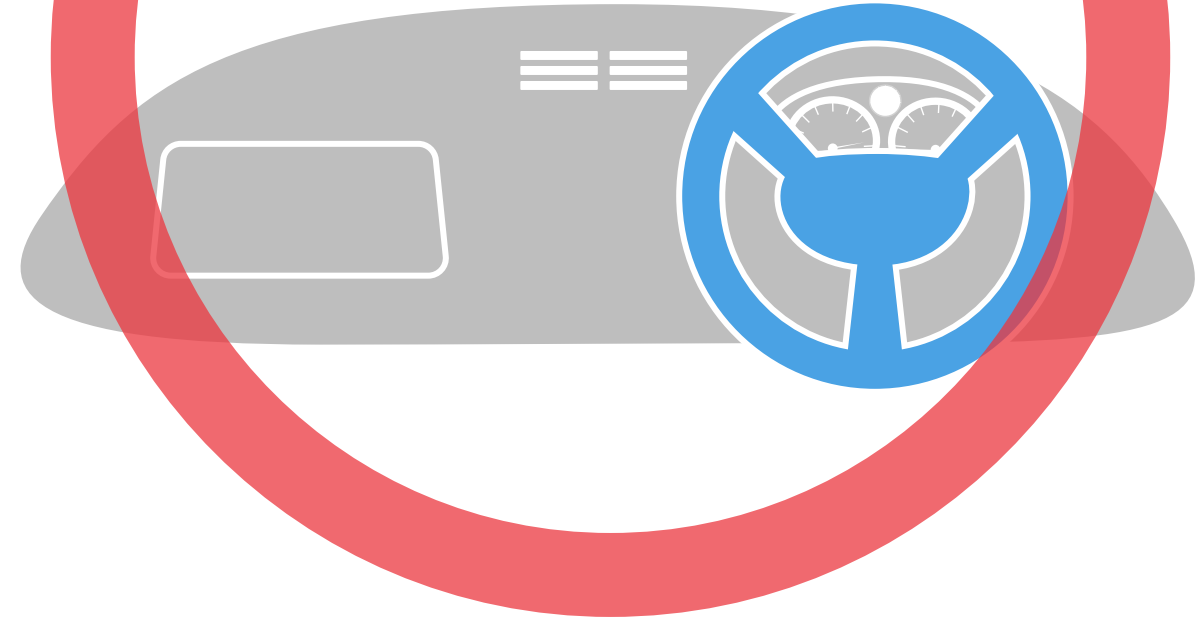
Next

Answer

A Left-hand drive

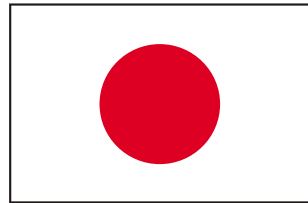


B Right-hand drive

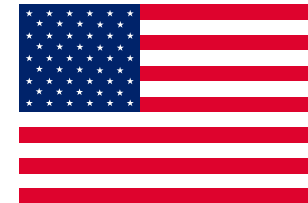
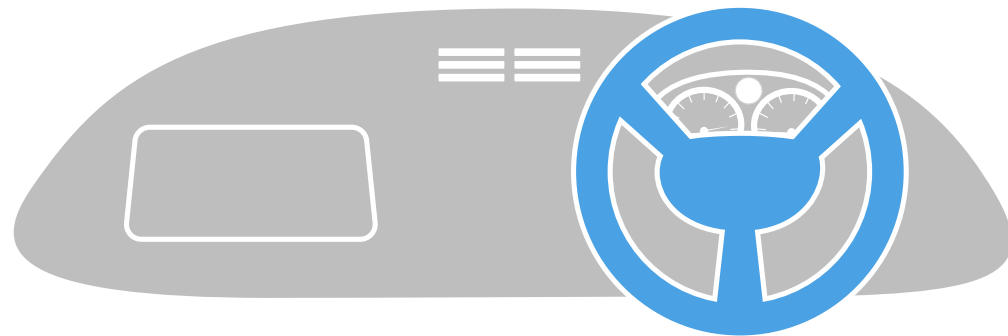


Next

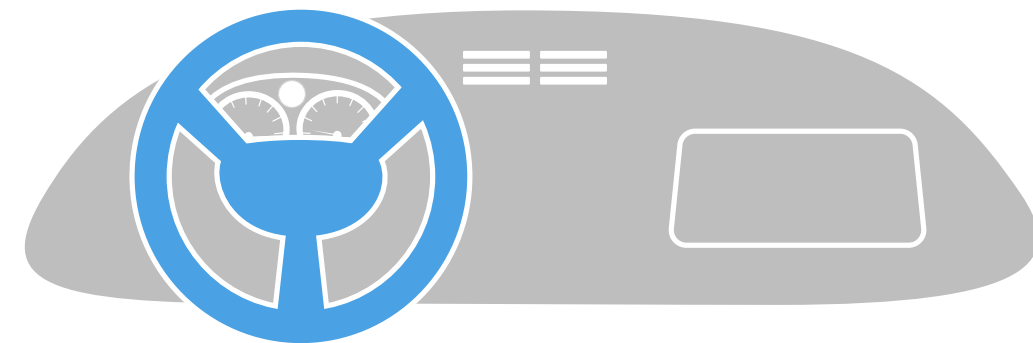
Description



In Japan, cars drive on the left side of the road. Generally, the steering wheel is on right side of the car. It is dangerous to drive on the opposite side. Please be aware of this when driving.



In America, vehicles are generally left-hand drive



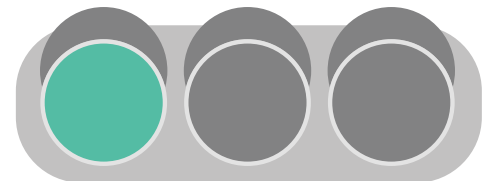
Next

Q.03

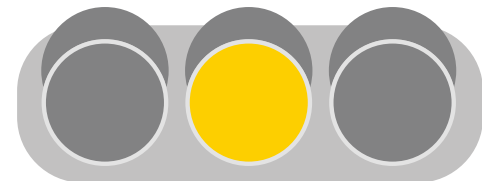
Please choose the correct answer for each traffic light color meaning.

Stop

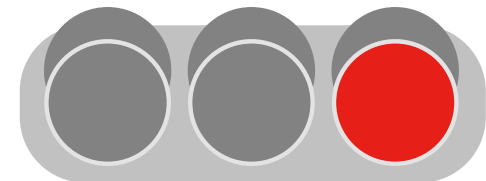
A



B



C

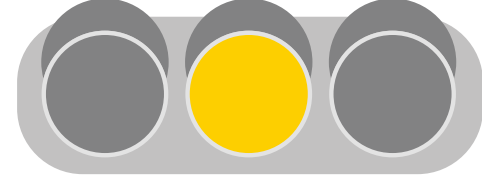


Go

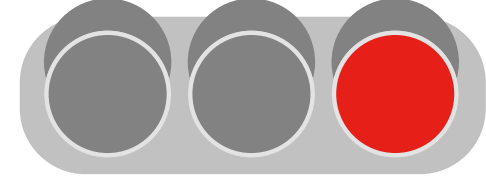
A



B

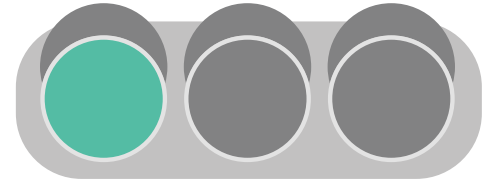


C

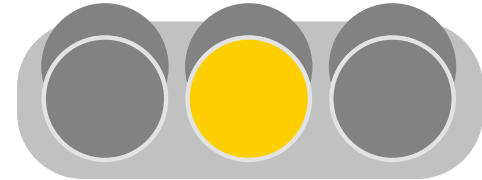


Go with caution

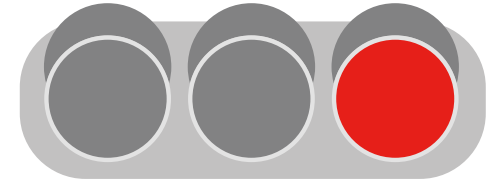
A



B



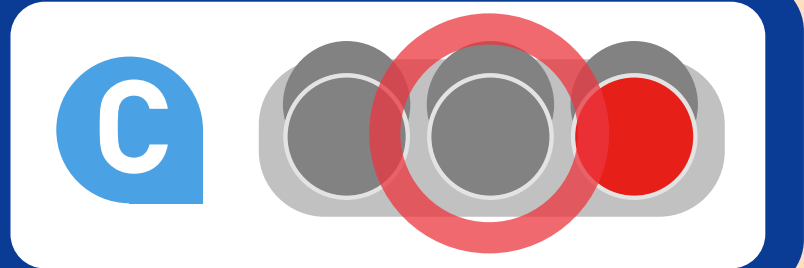
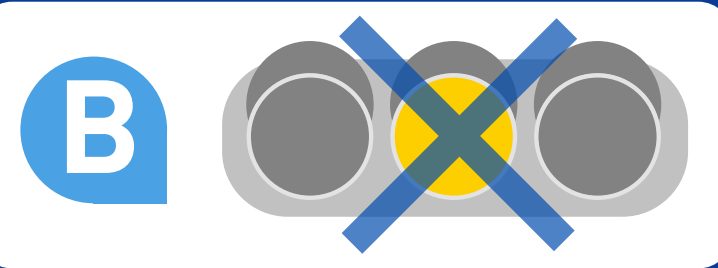
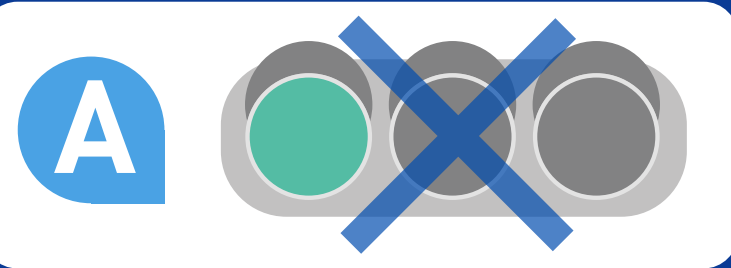
C



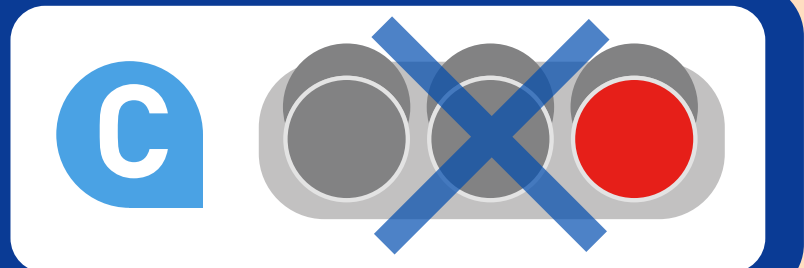
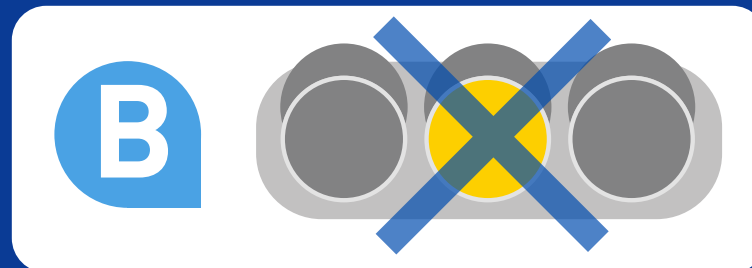
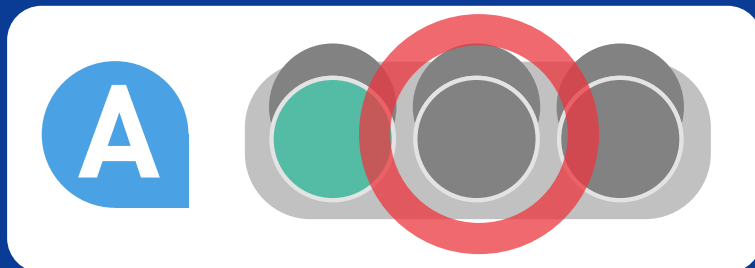
Next

Answer

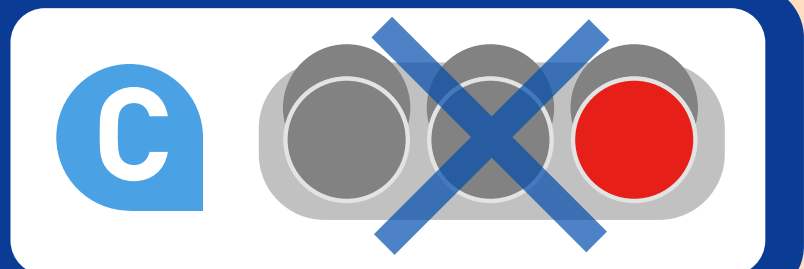
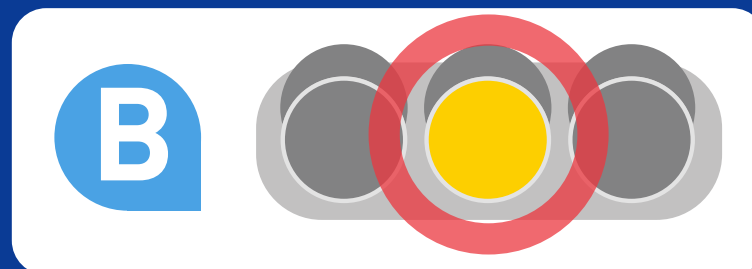
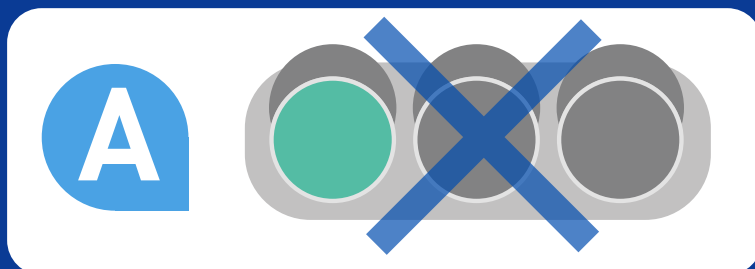
Stop



Go

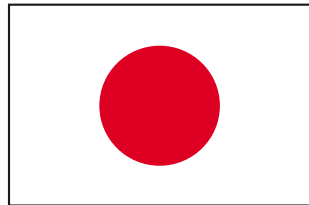


Go with caution



Next

Description

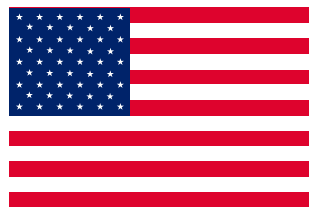


Japanese traffic lights



The meaning of Japanese traffic light colors are as follows. Please take note:

- ① Red: Stop (Stop at the Stop sign)
- ② Blue (Green):
Go (Proceed forward, or turn right or left)
- ③ Yellow (Orange): Go with caution
(If you stop, do not go ahead of the Stop sign).



American traffic lights

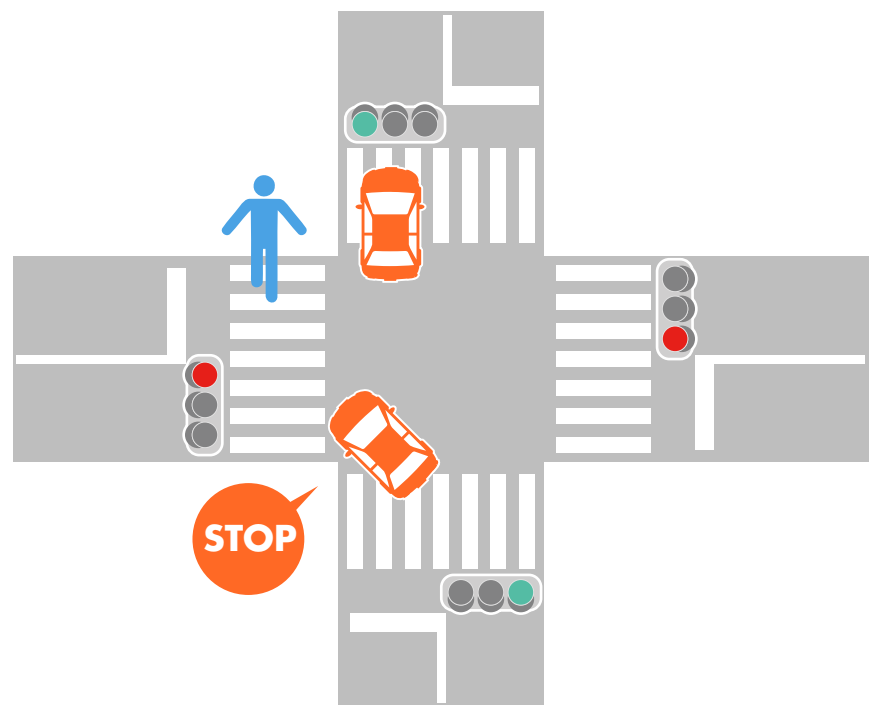
The meaning of traffic light colors are the same as Japan, but cars can turn right when the traffic light is red.

Next

Q.04 In Japan, which is the correct answer at an intersection?

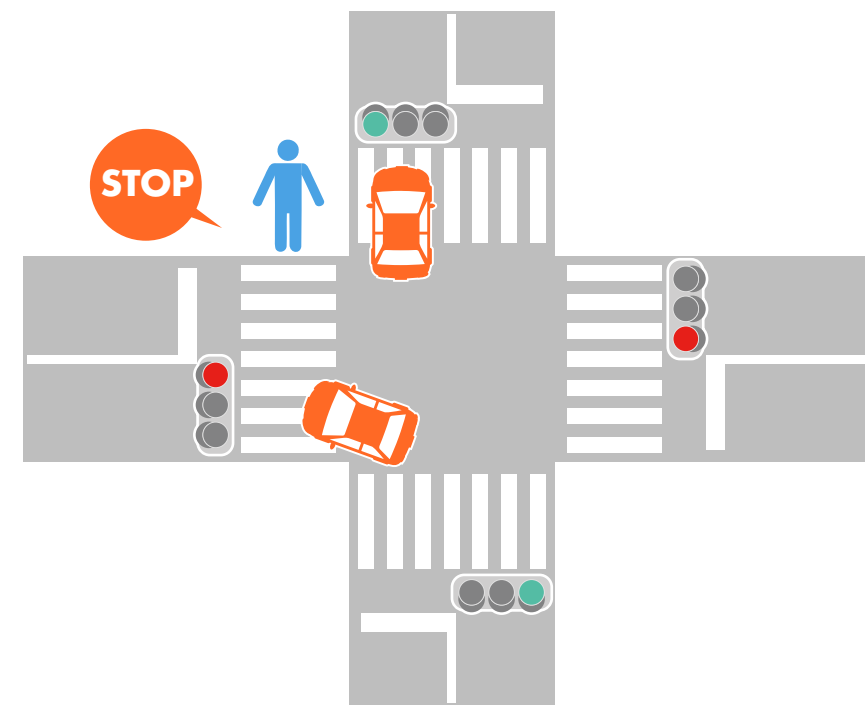
A

Pedestrians have priority



B

Vehicles have priority

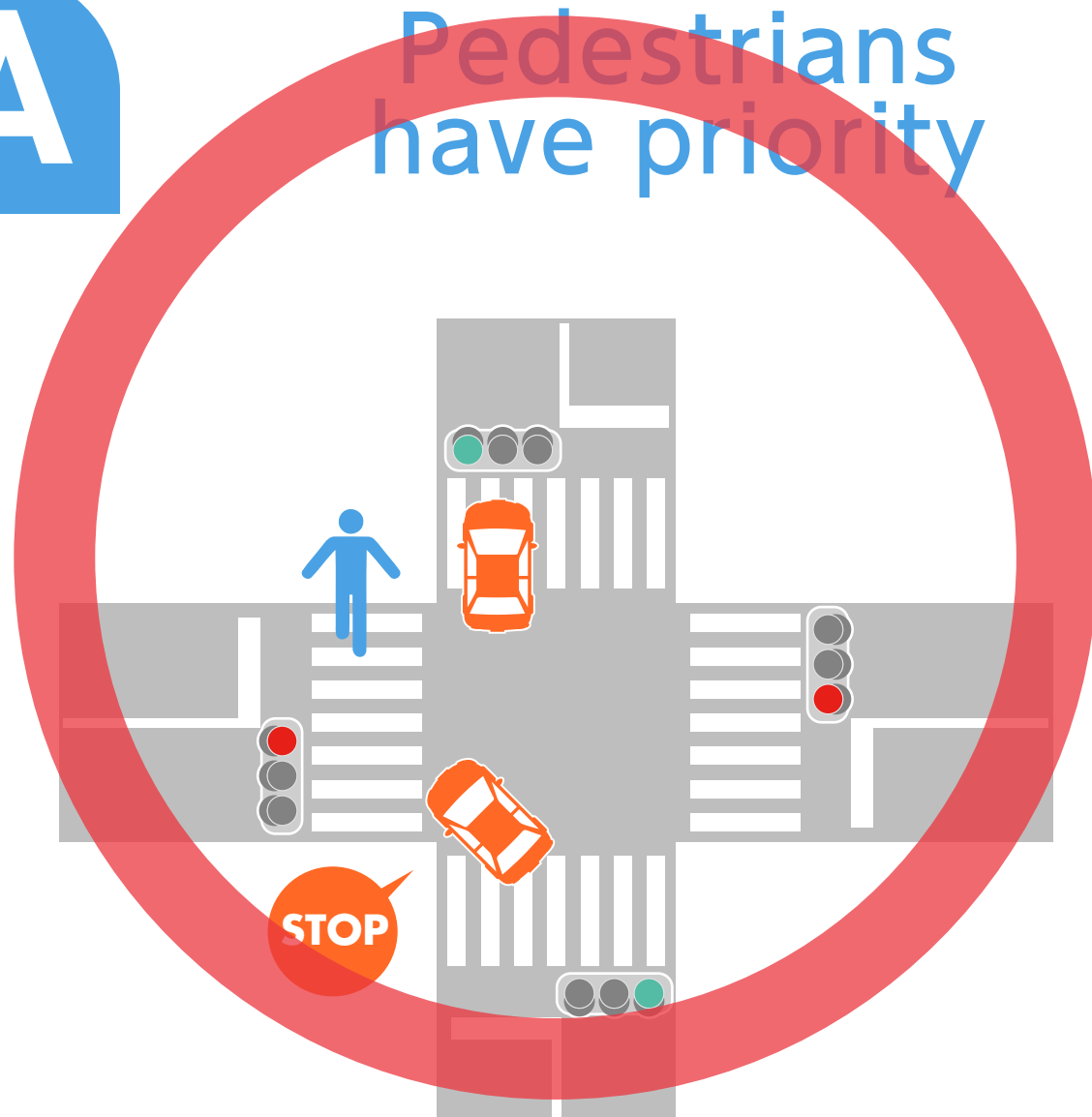


Next

Answer

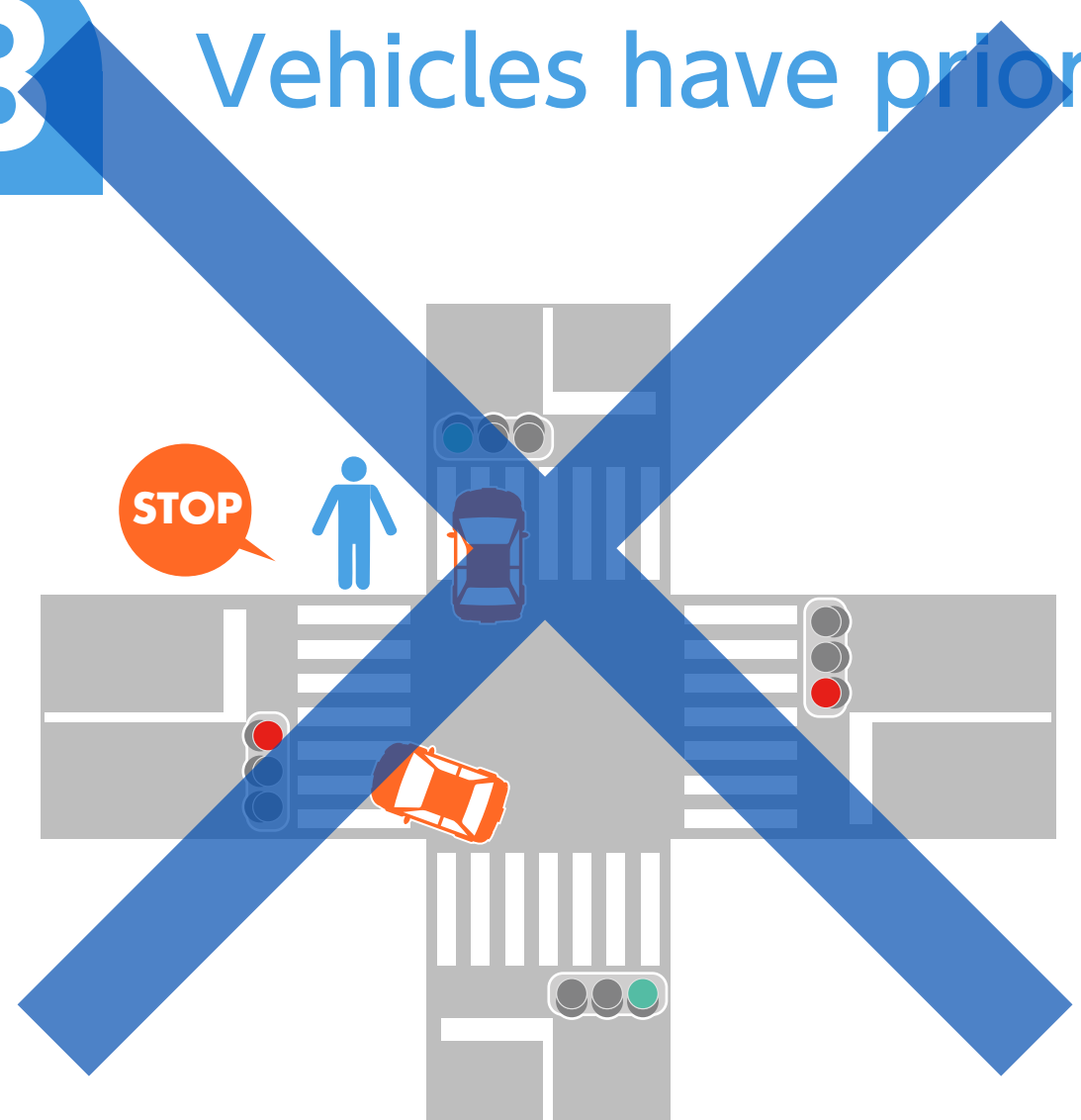
A

Pedestrians have priority



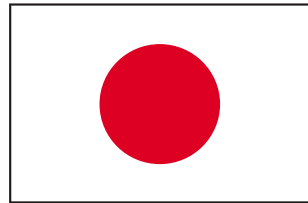
B

Vehicles have priority



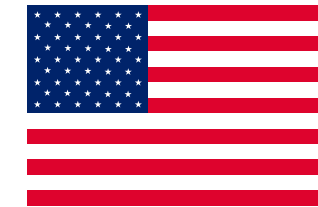
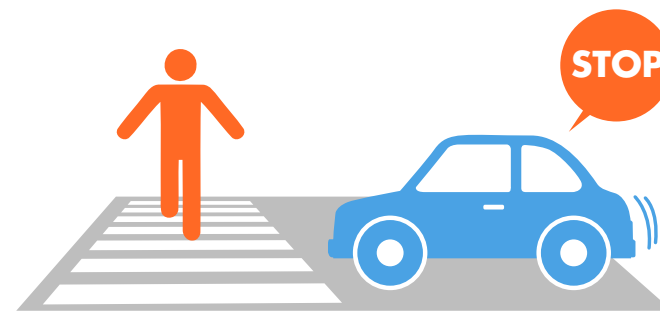
Next

Description

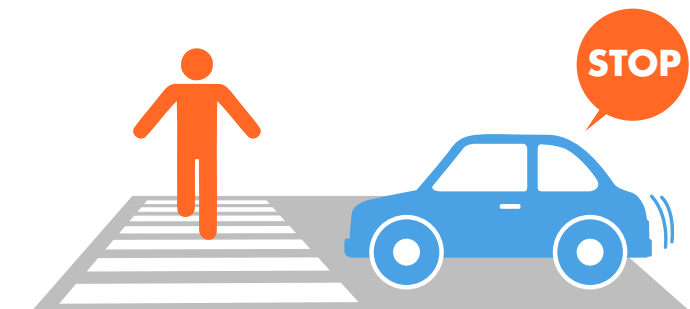


In Japan, when cars turn right or left at an intersection, please take note that the order of priority is as follows:

- ① Pedestrians have priority (when cars turn right or left)
- ② Priority to cars turning left
- ③ Priority to oncoming cars going straight when you are waiting to turn right



In America, priority is granted to pedestrians



Next

Q.05

What is the meaning of this sign?



A

Slow/Yield

B

Stop

C

Entry Permitted

D

No Parking

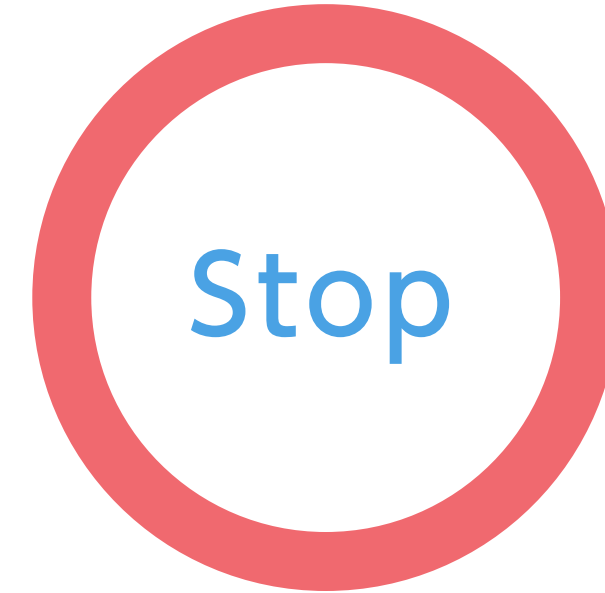
Next

Answer

A

~~Slow/Yield~~

B



C

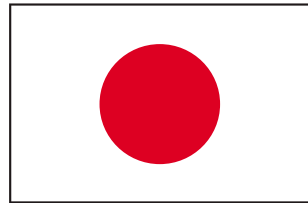
~~Entry Permitted~~

D

~~No Parking~~

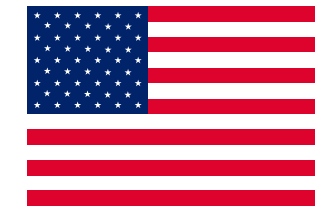
Next

Description



In Japan, cars must Stop at the places below:

- ① Stop sign
- ② Red blinking traffic lights
- ③ In front of a railroad crossing



Stop sign in America



Next

Q.06

What is the meaning of this arrow traffic light? (Single answer)



A

Cars can go straight and turn left

B

Cars can turn right

C

Trams/streetcars /trolleys can turn right

D

Pedestrians can go straight

Next

Answer

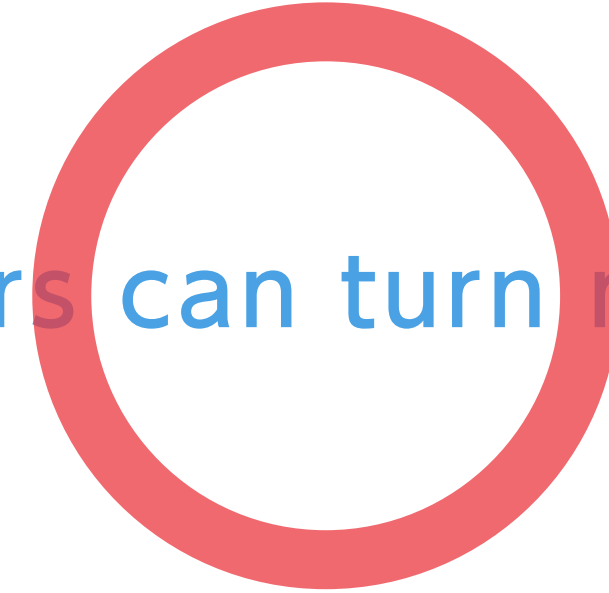
A

Cars can go straight
and turn left



B

Cars can turn right



C

Trams/streetcars
/trolleys
can turn right



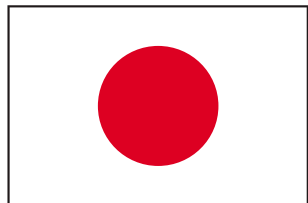
D

Pedestrians can
go straight



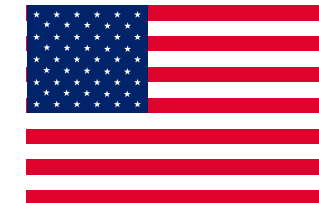
Next

Description



In Japan, there are arrow traffic lights. Please take note that vehicles can go depending on the arrow's direction and color.

- ① In Japan, if the arrow color is green (blue), cars can go in the direction it is pointing, even if the traffic light is red.
- ② If the arrow color is yellow, then only trams or streetcars can go in the direction it is pointing, even if the traffic light is red.



Arrow traffic lights in America



Next

Q.07

What is the meaning of this sign?



A

One-way

B

Road
prioritized
for cars



A

Fork
in the road

B

No right turns

Next

Answer



A



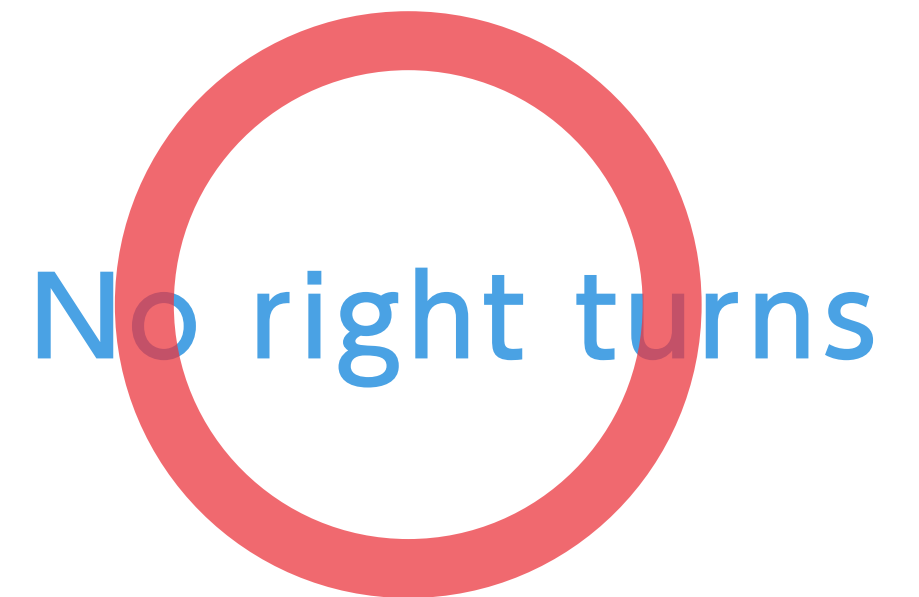
B



A

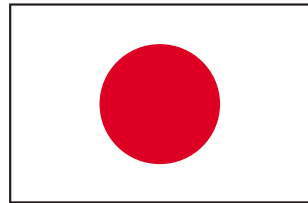


B



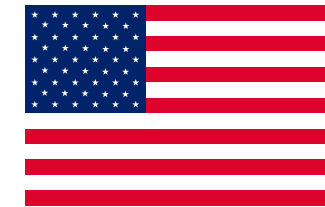
Next

Description



In Japan, you can see many One-Way signs and No Throughfare/Do Not Enter signs. Please take note of those signs.

- ① Drivers must go in the direction that a One-way sign is pointing.
- ② Follow all directional signs towards the way they are pointing. Please be careful as there are many different kinds of traffic signs that may be different than in your country.



Similar signs in America

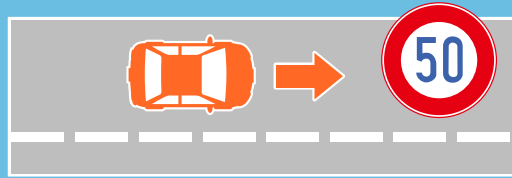


Next

Q.08

Please choose the correct answer for the speed limit in Japan.

Regular roads



A 50km/h

B 60km/h

C 80km/h

Highways



A 100km/h

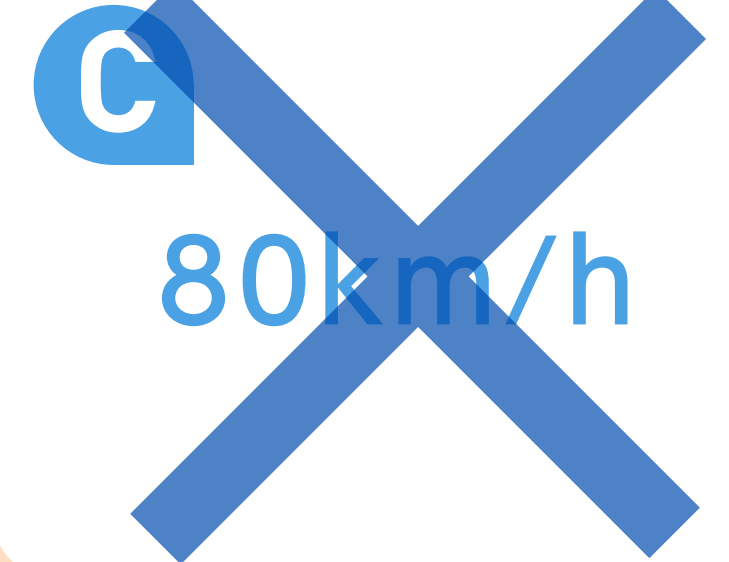
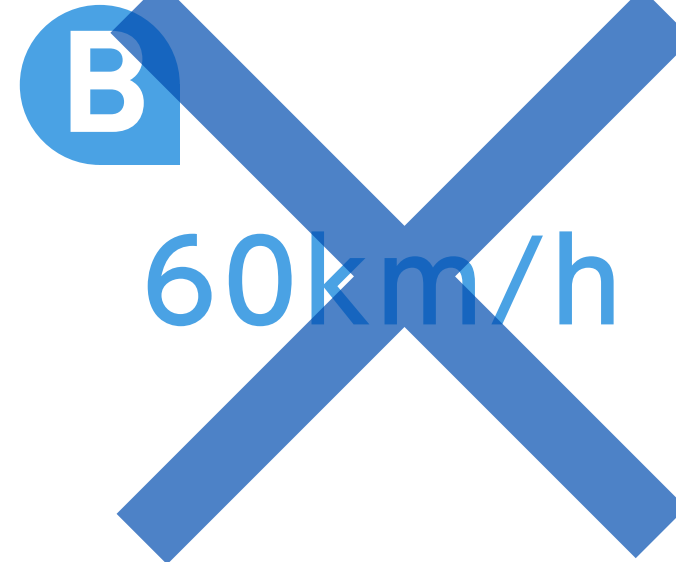
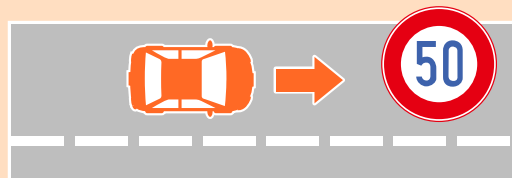
B 120km/h

C No speed limit

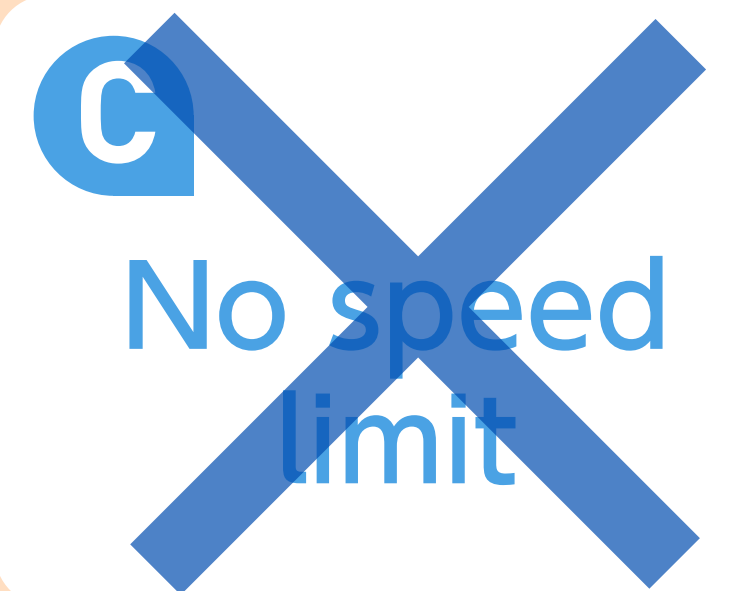
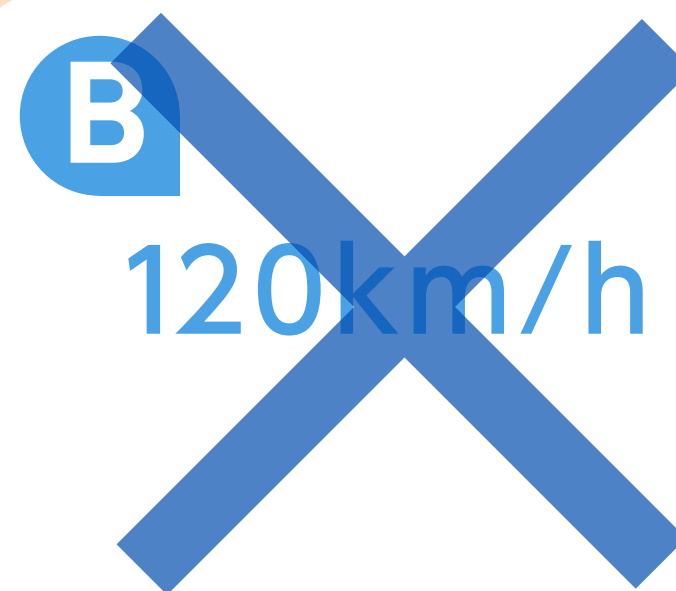
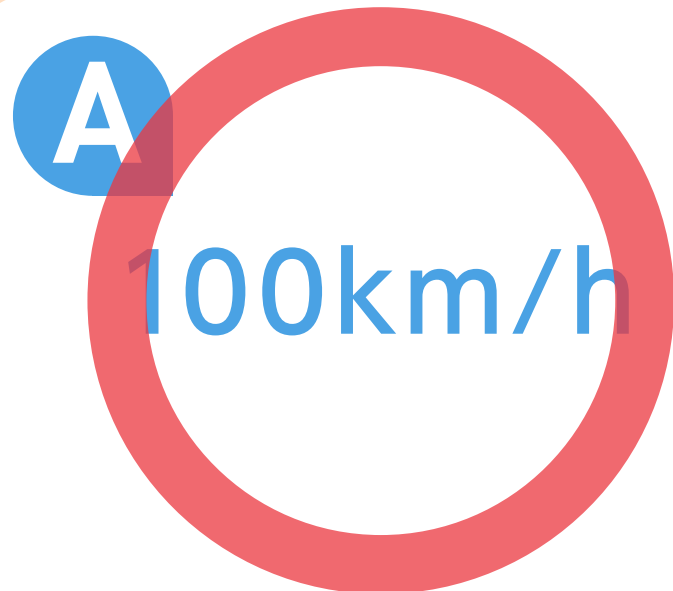
Next

Answer

Regular roads

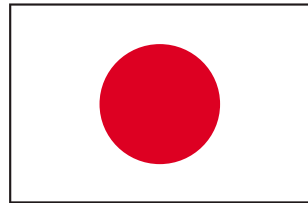


Highways



Next

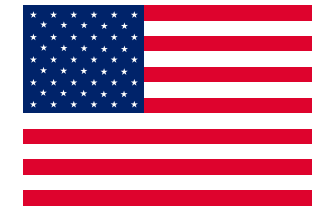
Description



In Japan, speed limits are shown on signs and is also dependent on current road conditions. Please drive carefully and follow the speed limit.

If there are no speed limit signs, the maximum speed is 60 km/h on regular roads and 100 km/h on the highway.

- ① Regular roads: 30-60km/h
- ② Highways: 70-100km/h



Regular roads:
40km(25miles)/h

Highways:
105km(65miles)/h

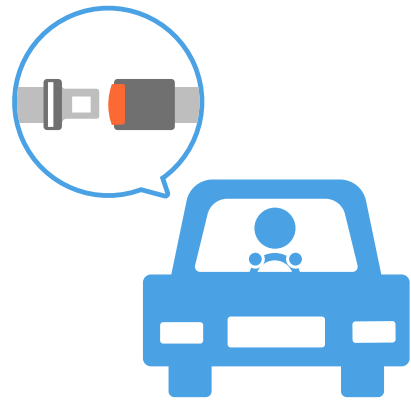


Next

Q.09 What is allowed while driving?

A

No seatbelt



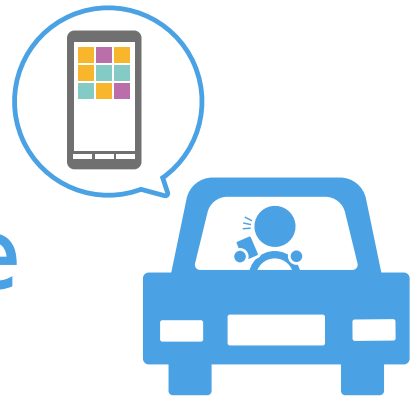
B

Drunk driving



C

Talking on the phone



D

A, B and C
all of them are
not allowed.

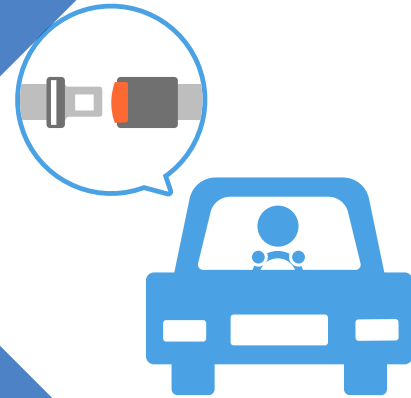


Next

Answer

A

No seatbelt



B

Drunk driving



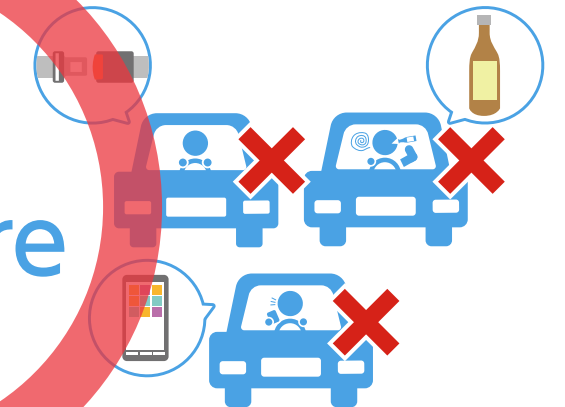
C

Talking on the phone



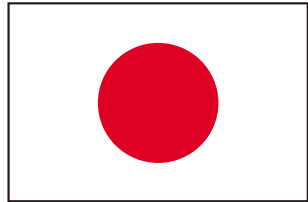
D

A, B and C
all of them are
not allowed.



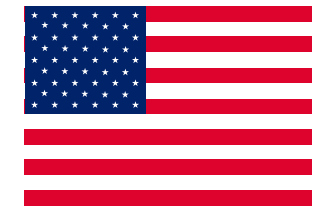
Next

Description



In Japan, the following behaviors are dangerous and prohibited while driving. These rules may be different than those in your country, so please be aware of them.

- ① Drinking and driving is prohibited. (It is strictly prohibited to drive after drinking any alcohol. This includes low alcoholic drinks like beer).
- ② All vehicle occupants (in the driver's seat, passenger seats, and back seats) must fasten seatbelts.
- ③ Use of phones or devices (talking, texting, searching, etc.) is prohibited while driving.



- ① In America, drinking and driving is not prohibited (Penalty for alcohol concentration level)
Blood-alcohol level: 0.08%
- ② Seatbelts must always be worn.

Next

Q. 10 Which of the following is the allowed when parking in Japan? (multiple answers)

A

Parking in a public car parking lot.



B

Long-term parking at a convenience store.



C

Parking on the side of the road that displays the sign below.



D

Parking on the side of the road that displays the sign below.



Next

Answer

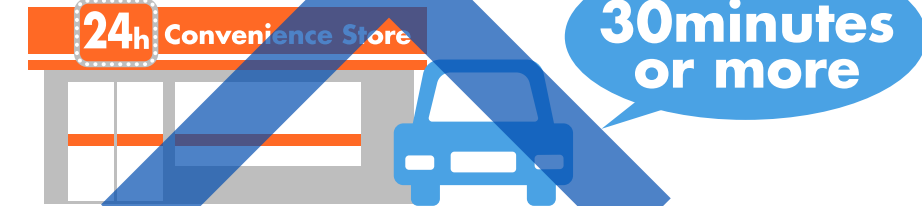
A

Parking in a public car parking lot.



B

Long-term parking at a convenience store.



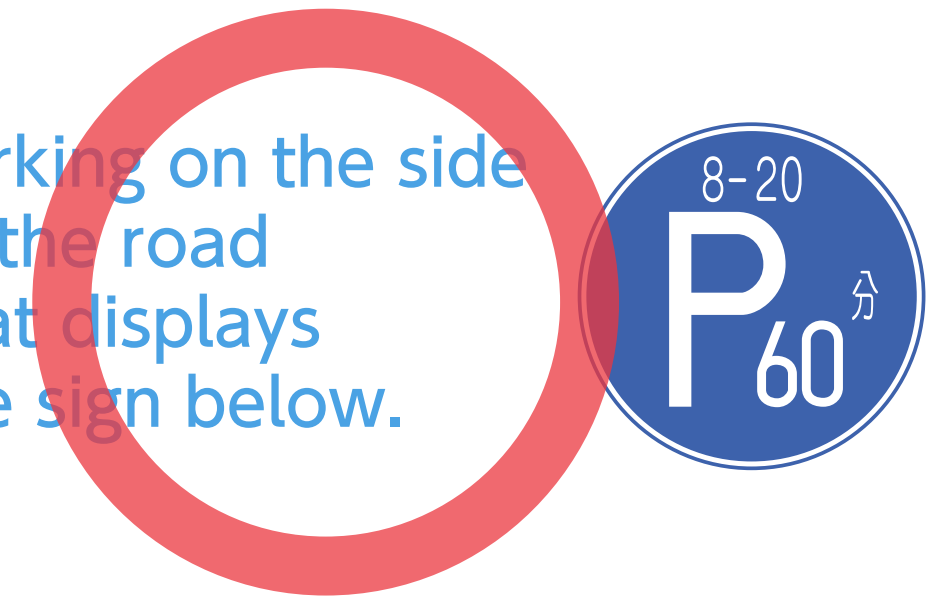
C

Parking on the side of the road that displays the sign below.



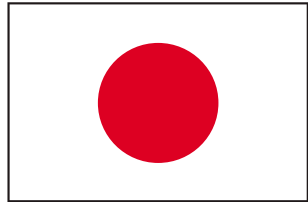
D

Parking on the side of the road that displays the sign below.



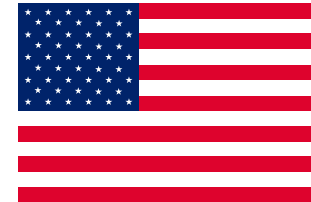
Next

Description



In Japan, parking in the following areas are allowed:

- ① In a public parking lot where you will use the stores and facilities.
(It is considered poor etiquette to park at convenience stores but do not use them).
- ② At a toll parking lot.
- ③ On the side of the road that displays the parking sign. (If you park on a road with no parking sign, you may risk getting a fine).



(No Parking Area)
Traffic sign shows
"No stopping" area
No parking inside an intersection

Next

Q. 1 1

How much more slippery is it on an icy winter road compared to a dry road?



A

No difference

B

About 2 times more slippery

C

About 5 times more slippery

D

About 10 times more slippery

Next

Answer

A

No difference

B

About 2 times
more slippery

C

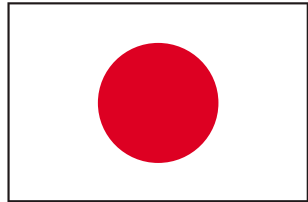
About 5 times
more slippery

D

About 10 times
more slippery

Next

Description



A winter road is **10 times more** slippery compared to a dry road. Please drive slowly and responsibly. Take extra care during winter since roads may look dry but is actually icy.



Next

Q. 12

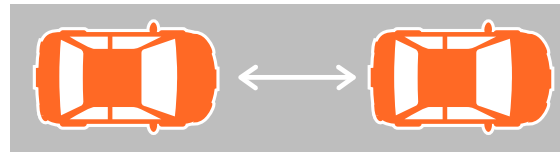
Please choose the correct answer when driving in winter conditions.

The following distance behind another car

(comparing to dry road conditions)

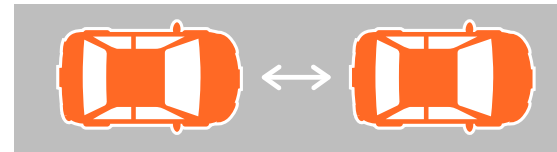
A

There is no difference



B

The distance should be closer



C

The distance should be further



The driving speed

(Compared to dry road conditions)

A

There is no difference



B

Drive faster



C

Drive more slowly

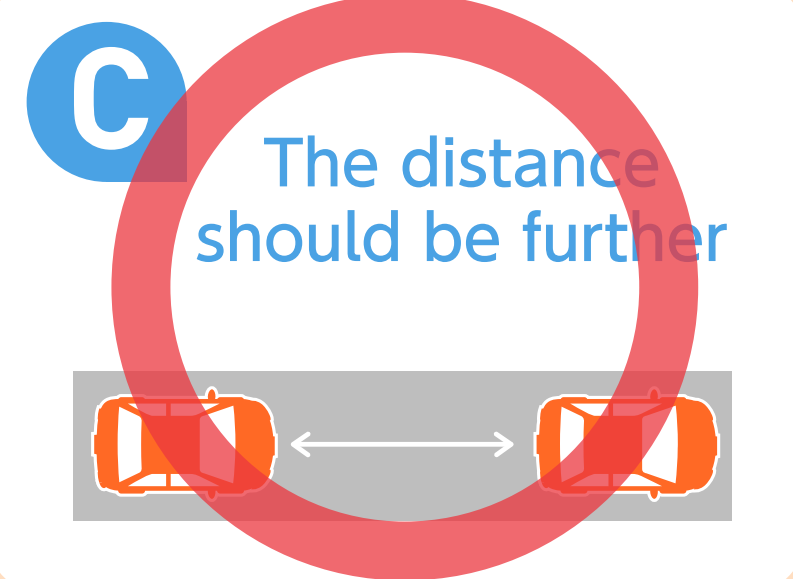
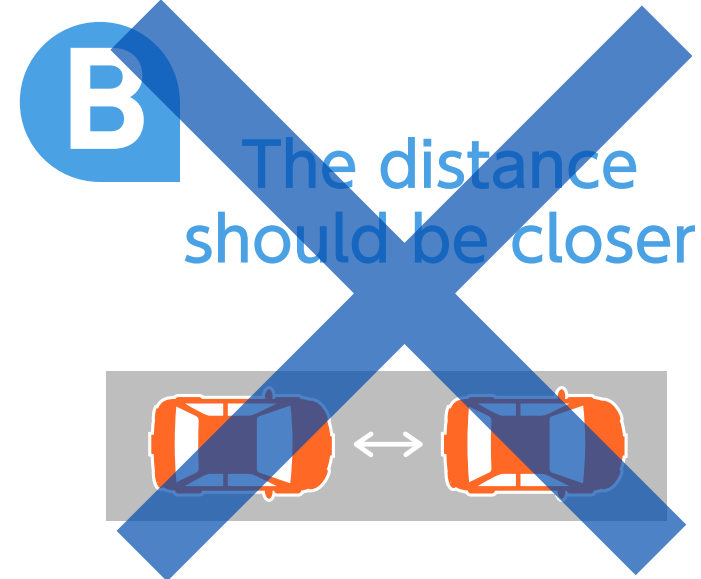
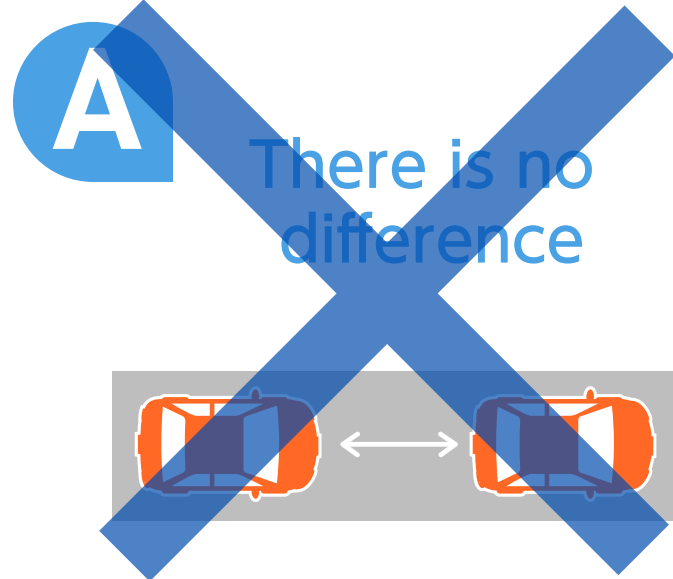


Next

Answer

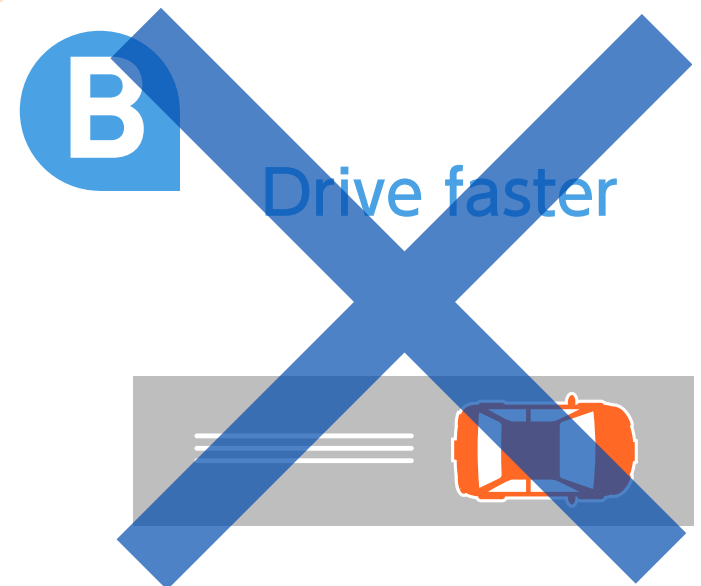
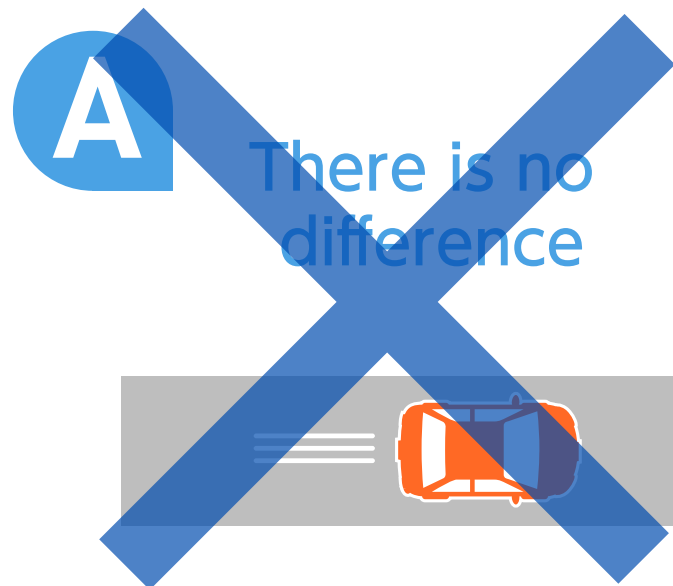
The following distance behind another car

(comparing to dry road conditions)



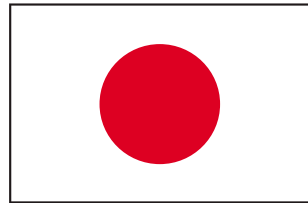
The driving speed

(Compared to dry road conditions)



Next

Description



In winter conditions, it takes much more time and distance to stop your car compared to dry roads. Please leave more following distance behind another car, slow down, and drive safe.



Next

Q. 13

Please choose the correct answer for braking in winter conditions.

A

Suddenly slam on the brakes.



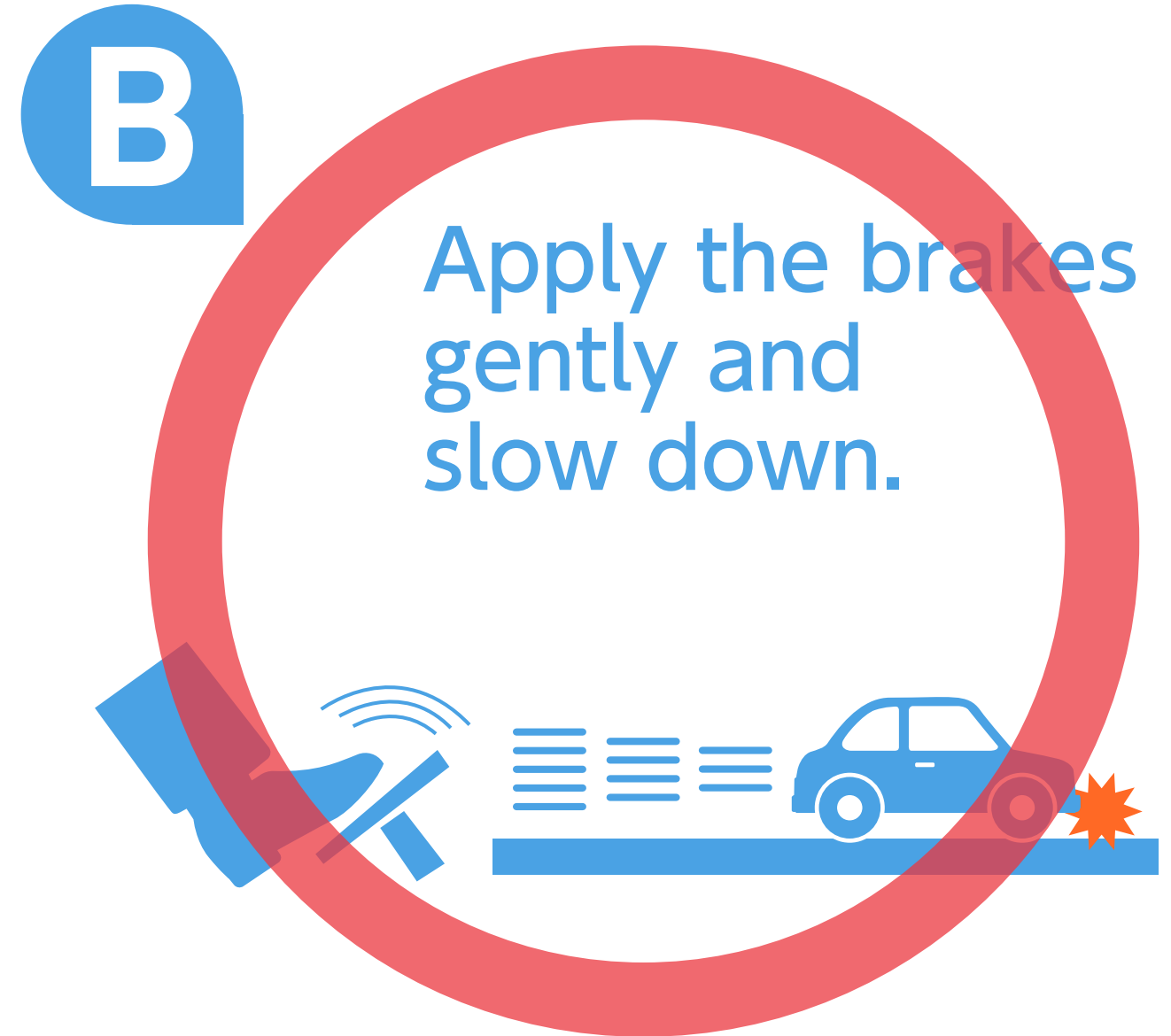
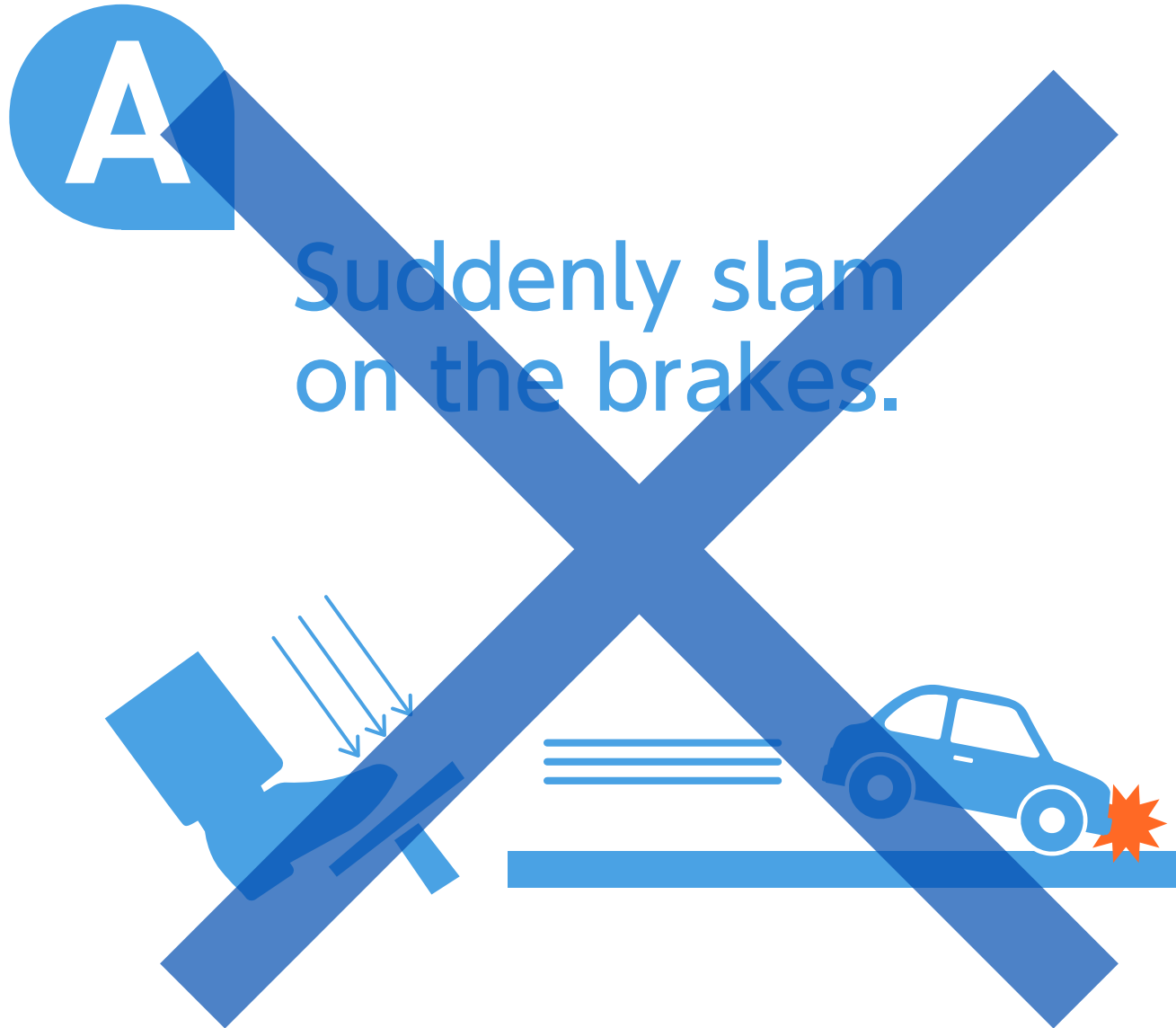
B

Apply the brakes gently and slow down.



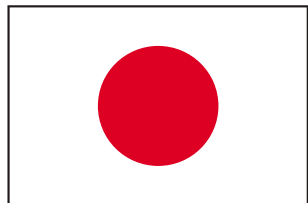
Next

Answer



Next

Description



When slamming on the brakes on icy roads, the steering wheel will lock up and your car will slip out of control. Avoid slamming on the brakes and instead, gently apply the brakes to slow down before coming to a complete stop.

About ABS

In Japan, most rental cars have an anti-lock brake system (ABS). A car equipped with an ABS prevents the wheels from locking up, even if a driver slams on the brakes. When ABS is active, the brake pedal will suddenly vibrate. Continue stepping on the brake pedal even as it is vibrating and point the car in the direction you want to go using the steering wheel.



Next

Q. 14

Please choose the correct answer for driving in dangerous areas (curves in the road, tunnel exits) during winter.

How to drive on curvy roads.

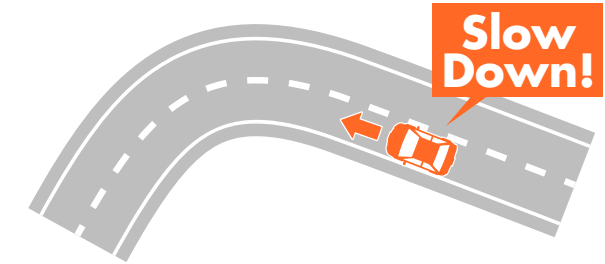
A

Reduce speed gradually after going into curves.



B

Reduce speed before going into curves.



How to drive near tunnel exits.

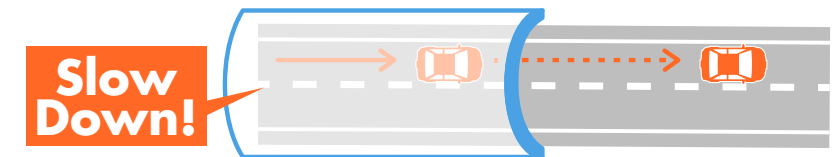
A

Drive the same speed as inside a tunnel.



B

Reduce the speed in a tunnel before exiting.



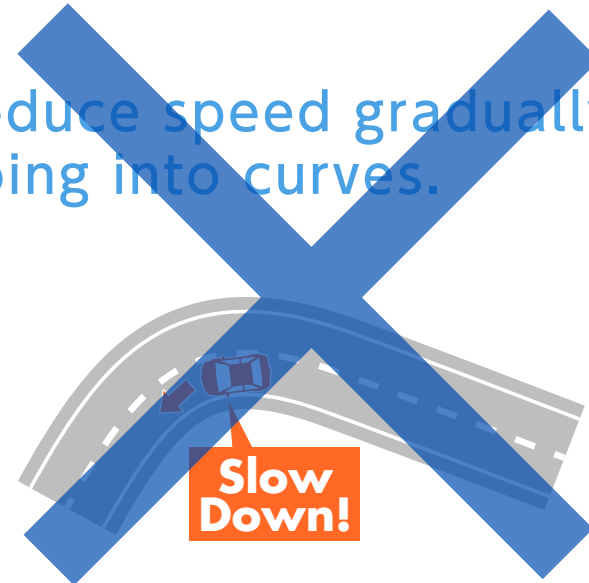
Next

Answer

How to drive on curvy roads.

A

Reduce speed gradually after going into curves.



B

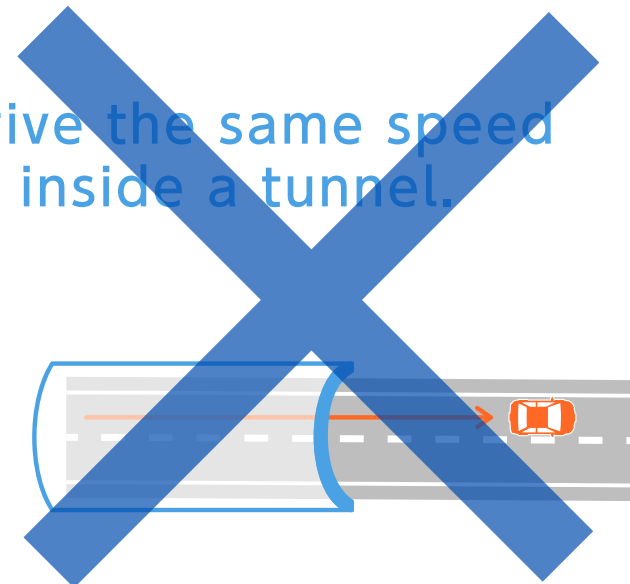
Reduce speed before going into curves.



How to drive near tunnel exits.

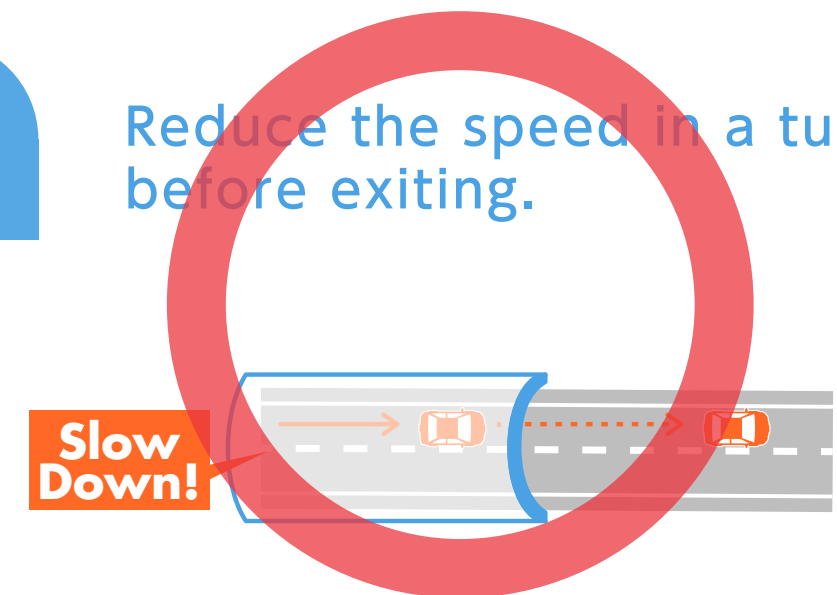
A

Drive the same speed as inside a tunnel.



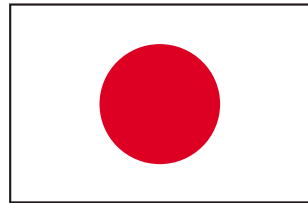
B

Reduce the speed in a tunnel before exiting.



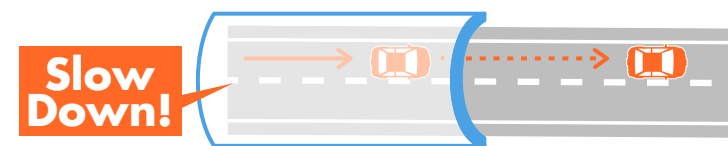
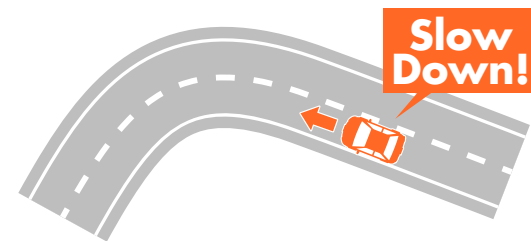
Next

Description




In winter, roads are much more slippery compared to dry road conditions. Take care to drive safely, especially near the following places.

- ① Curves: Turns in the road become especially dangerous when it is slippery. Reduce speed before going into curves and make turns slowly.
- ② Tunnel: It is usually dry inside a tunnel. However, the exit is often icy and may cause your car to slip if you come out of a tunnel at the same speed. Reduce speed before the tunnel exit.



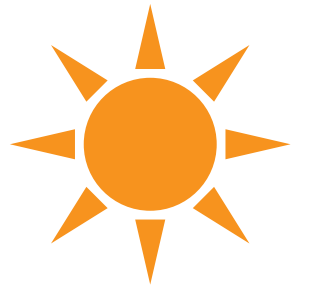
Next

Comprehension check of traffic rules in Japan

	Your Answer	Your score
Q.01 Driving lane	<input type="radio"/>	
Q.02 Steering wheel	<input type="radio"/>	
Q.03 Traffic lights	<input checked="" type="radio"/>	
Q.04 Rules of the intersection	<input checked="" type="radio"/>	
Q.05 Stop sign	<input type="radio"/>	
Q.06 Arrow traffic lights	<input type="radio"/>	
Q.07 One-way	<input type="radio"/>	
Q.08 Speed limits	<input type="radio"/>	
Q.09 Rules while driving	<input checked="" type="radio"/>	
Q.10 Parking	<input type="radio"/>	
Q.11 Slippery conditions on winter roads	<input checked="" type="radio"/>	
Q.12 Winter driving	<input checked="" type="radio"/>	
Q.13 Braking in winter	<input type="radio"/>	
Q.14 Especially dangerous areas in winter	<input type="radio"/>	

Next

**Have a safe
and nice trip!**



Finish