

PLEASE BE CAREFUL AND OBEY TRAFFIC RULES WHEN DRIVING IN JAPAN

An increasing number of overseas tourists are getting into trouble or accidents when driving on Japan's roads. Always remember that Japan drives on the left side of the road, and to obey stop signs and traffic lights. This guide introduces some major rules that will help you avoid getting into an accident.

1 Stop when traffic lights are red!

Proceed when lights are green. Stop when lights are yellow or red.



* In the case of traffic lights with a green arrow, proceed in the direction of the arrow when it lights up while paying attention to oncoming vehicles.

See page 4

2 Stop when you see this sign!

Stop when you see the below sign at an intersection, and check all directions before proceeding.

* You should check all directions before entering intersections, even without this sign.



Japan



Korea



Hong Kong



Taiwan

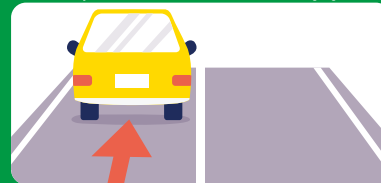


See page 5

Kyushu Rent-A-Car Drive Manual

3 Cars must drive on the left

Make sure you are in the correct lane after turning right or left.



See page 4

4 Obey speed limits!

Do not exceed the speed limits indicated on signs: 30 (30 km/h), 40 (40 km/h) and 50 (50 km/h). The speed limit on roads without signs is 60 km/h.

* The maximum speed limit on public roads is 60 km/h.



See page 10

5 Drive with consideration for others

Stop when you see pedestrians trying to cross roads or intersections. Drive safely, always showing consideration to pedestrians and other vehicles.



See page 6

6 Exercise caution at intersections

Obey traffic lights at intersections. Make sure to check all directions before entering intersections without traffic lights.

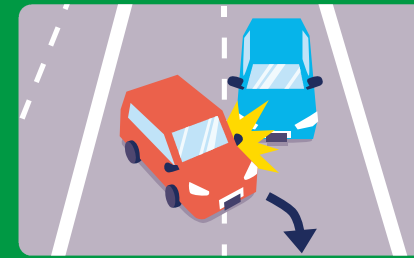


- 1 When turning right, oncoming vehicles have right of way.
- 2 Remember to stay in the left lane after turning right.
- 3 When turning left, check your left-hand side for bicycles or motorcycles.

See page 6

7 Do not change lanes suddenly

It is dangerous to suddenly change lanes or overtake other vehicles haphazardly. Check the surrounding road conditions to see whether it is safe and change lanes exercising due caution.



See page 7

Huh!? Fines in Japan are that expensive!?

You can be hit with a large fine even for small traffic violations. Check now to avoid trouble down the road!



CHECK!!

Don't drink and drive!

Drinking and driving is illegal! Do not drive if you have consumed even a little alcohol! If you do, you may be fined ¥500,000 or more.



Don't use a smartphone when driving!

It is against the law to drive while talking on the phone, sending messages or looking at your smartphone.



See page 10

Contact the police and your car rental company's accident assistance hotline immediately if you are involved in an accident!!

You have taken out Collision Damage Waiver (CDW) coverage, right? These schemes pay out compensation for deductibles when you are involved in an accident. However, if you fail to notify the police or your car rental company, you may not be covered by your insurance and will have to pay the repair costs. In addition, if you damage the car body or dirty the car's interior, you may be charged a Non-Operation Charge (NOC) as a part of compensation that is not covered by your insurance. Coverage varies by insurance policy, so make sure to double check the coverage content of your policy!!

See page 8