

How to use expressways

If you use expressways, you will be able to visit many more places and travel in comfort. However, there is also the risk of being involved in a serious accident. Obey Japan's speed limit on expressways, which is a maximum of 100 km/h, and do not overtake other vehicles recklessly. In addition, drive carefully when in the vicinity of ETC gates, located at the entrances and exits of expressways, as these are hotspots for accidents and other trouble.

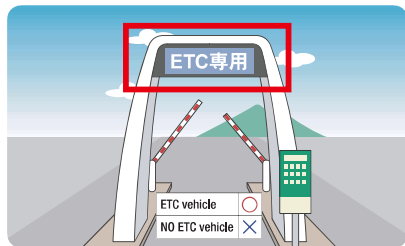


Reduce your speed to 20 km/h or less when entering ETC gates

ETC is a system that allows you to pass through gates without having to deal with tickets or money. There are signs indicating ETC gates at expressway entrances and in front of toll booths, so promptly decide on a gate, change lanes and proceed to the gate. As the bar opens and closes slowly, make sure to reduce your speed to 20 km/h or under. Ensure you leave sufficient space between the vehicle in front and never change lanes directly in front of gates. You cannot use gates in the event the signal above the gate is red.

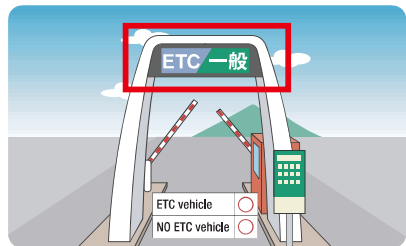
There are two types of ETC gate

ETC-only lane (ETC専用)



The system detects when a vehicle is in the lane and the bar opens. Pass through the gate only after you are sure the bar has opened. Ensure to reduce your speed, and do not brake suddenly just in front of the bar, as this risks causing a collision!

Joint lane for vehicles without ETC (ETC/一般)



Lanes with a green sign displaying "General (一般)" can also be used by vehicles without ETC devices. Vehicles without ETC must stop once to receive a ticket or pay money. This poses the risk of a collision, so pay attention to the vehicle in front's movement and maintain sufficient space.

If the bar does not open



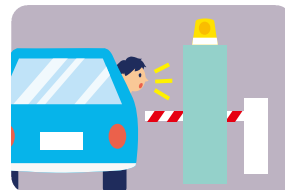
Never reverse your car!

If you do, the vehicle behind may collide into the back of your car.



Never get out of your car!

It is extremely dangerous to get out of your car and walk in lanes or on the expressway. Never leave your car, even if the bar does not open.



Call a member of staff on the interphone

Interphones are situated in ETC lanes, so please call a member of staff and follow the instructions you are given.

Expressway signs are displayed in green

九州自動車道
KYUSHU EXPWY



Entrance sign

Follow this sign to enter an expressway. It displays the route name for the expressway along with the direction of the nearest entrance.

本線
EXPWY



Entrance to main road from service area or parking area

This sign indicates the direction in which vehicles enter the main road from a service area or parking area. Please make sure to check the direction in which to drive when departing from these areas, as there are an increasing number of accidents caused by people mistakenly driving in the wrong direction.

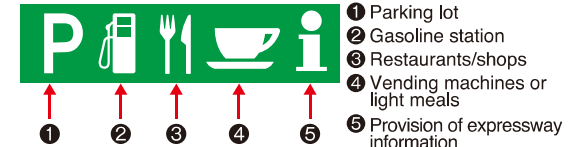
料金所1km
TOLL GATE



Toll both

This sign indicates that there is a toll booth 1 km ahead. When you see this sign before your exit, switch to the left-hand lane well in advance.

Service area (SA) / parking area (PA) sign



Knife and fork or gasoline station symbols indicate service areas, which provide facilities and services where you can take a rest, such as toilets and restaurants, as well as a gasoline station. There are two main kinds of parking area: when you see a coffee cup symbol, it indicates a parking area with toilets, facilities where you can eat a light meal, vending machines, etc., while a "P" symbol only indicates a parking area with toilets, vending machines, etc.

Exit sign

These signs are located at expressway exits. Please pay attention to signs carefully, as you cannot reverse or make U-turns, even if you inadvertently drive past the exit you intend to take.

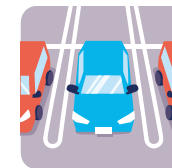


Etiquette and rules at service areas and parking areas



How to use toilets

Please make sure to flush used toilet paper. Dispose of other waste in the sanitary waste receptacle located within the toilet – do not flush it down the toilet!



Parking spaces

Do not use spaces for large vehicles or disabled spaces unless there is a disabled person travelling in your vehicle. Also, watch out for pedestrians in parking spaces and drive slowly.



Smoke only in designated areas

In Japan, smoking is restricted to designated smoking areas, and smoking is prohibited in restaurants and shops, as well as roads outside these designated smoking areas and in toilets. Please make sure to use designated areas when you smoke.



Take care not to drive in the wrong direction when rejoining the expressway!!

There are an increasing number of accidents caused by people mistakenly driving in the wrong direction when rejoining the expressway from service areas or parking areas. Driving in the wrong direction is extremely dangerous! When leaving a parking area, make sure to check the sign indicating the motorway entrance.



In case of emergency, call the police and your car rental company's accident assistance hotline.

It is illegal to continue driving without doing so, and you will no longer be covered by insurance.